

savannah bay gallery

本土创造
BENTU

Official retailer - Europe & USA

www.savannah-bay.com

contact@savannah-bay.com

+33 (0)9.83.41.00.89

品牌名称 • Brand
本土创造 • BENTU

创建地区 • Location
中国 • 广州 • China • Guangzhou

创建时间 • Established
2011 • 05 • 20

品牌官网 • Website
www.bentudesign.com

针对这个世界，保持好奇，保持聆听，保持践行。
Towards the world, keep being curious, listening, practicing.

关于本土创造 ABOUT BENTU

Bentu is an independent design brand founded in 2011. We're engaged in product design and innovation, combining design with manufacture. We're an experimental, explorative, and cross-over team. Based on our design, we make products that meet our daily need. Through a series of experiments and exploration, we make each material return to its nature by revealing its original texture.

In innate character, Bentu reverts to demand, close to indigenous culture; outer form, the so-called international design is, free from all the unnecessary, pursuing unrestrained styles and returning the emphasis to function.

Bentu focuses on R&D, design, production, sales and promotion of products. Our products include lighting, indoor and outdoor furniture, wall decors and accessories. Bentu's products meet international standards, and are of original design and high quality. Most products are certified to CE, ROHS2.0, SAA, C-TICK, FCC, CCC, PSE and IC. We have our own IPR and more than 200 patents.

目录 CONTENT

1 清水系列 CONCRETE COLLECTION

- 灯具 Lighting
- 家具 Furniture
- 摆件 Home Accessories

2 水磨石系列 TERRAZZO COLLECTION

- 灯具 Lighting
- 家具 Furniture
- 摆件 Home Accessories

3 建材系列 BENTU SURFACE

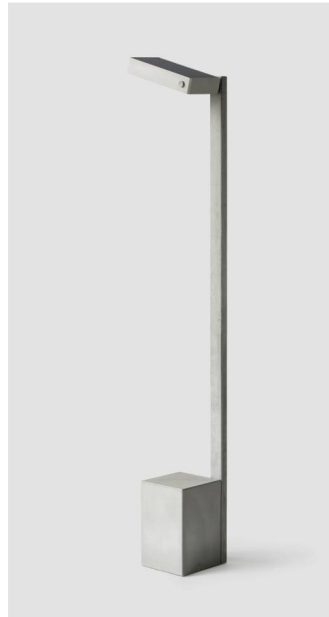
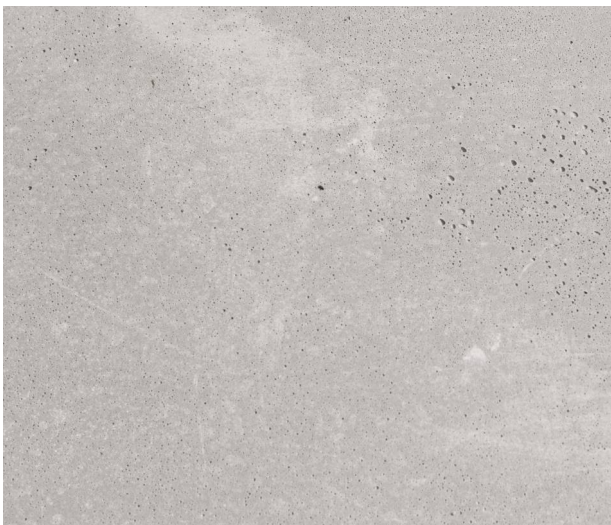
- 墙砖 Tiles < 600 mm
- 板材 Boards 1200 mm



清水系列 CONCRETE COLLECTION

From building to products, concrete is back to design stage. Concrete's unique texture is a highlight of interior styling, it can bring people a new feeling which other materials can't.

Bentu engaged in natural expression of material. Its Concrete products retain the original demoulded surface and pore texture formed naturally. In terms of visual effect, our minimalist design achieve aesthetic sense and present the pure, clean, strong feeling of concrete. The materials are mixed with concrete and construction waste (10-50%), without adding non-environmental artificial coagulants such as resin. Bentu insist on the pursuit of nature and purity.



Solar Outdoor Floor Lamp • Yu

Material: Concrete,
Demolition Leftover Concrete
Size: 300×200×H1700 mm
(lamp head: 300×155×H55.5 mm)
(lamp stand: 200×200×H300 mm)
Weight: 35.5 kg
Light Source: LED
Colour Temperature: 3500 K
Wattage: 3-5 W
Voltage: DC 3.7 V
Colour: Cement Grey



Pendant Lamp • Yue

Material: Concrete, Aluminum, Acrylic,
Demolition Leftover Concrete
Size: S: Ø102×H98 mm
M: Ø130×H127 mm
Weight: 1.1 / 2 kg
Cord: Black, 3 m
Light Source: G4 LED
Colour Temperature: 3000 K
Wattage: 2 W
Voltage: 220-240 V
Colour: Cement Grey



Pendant Lamp • Die

Material: Concrete, Aluminum,
Demolition Leftover Concrete
Size: $\varnothing 250 \times h178$ mm
Weight: 1.9 kg
Cord: Black, 3 m
Light Source: E27 COB LED
Colour Temperature: 3000 K
Wattage: 3 W
Voltage: 100-240 V
Colour: Grey White / Cement Grey
Accessory Colour: Black



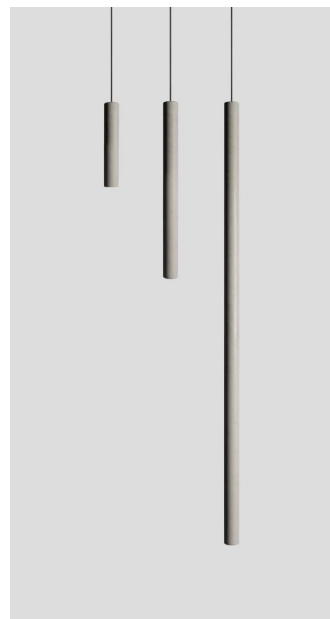
Pendant Lamp • Bang

Material: Concrete, Aluminum,
Demolition Leftover Concrete
Size: $\varnothing 40 \times H310$ mm
Weight: 0.9 kg
Cord: Black, 3 m
Light Source: G9 LED
Colour Temperature: 3000 K
Wattage: 2 W
Voltage: 220-240 V
Colour: Cement Grey
Accessory Colour: Black



Pendant Lamp • Yi

Material: Concrete, Aluminum,
Demolition Leftover Concrete
Size: $1245 \times 48 \times H80$ mm
Weight: 5 kg
Cord: Black, 3 m
Steel Wire: 3 m
Light Source: T5 LED
Colour Temperature: 3000 K / 6500 K
Wattage: 16 W
Voltage: 100-240 V
Colour: Cement Grey



Pendant Lamp • Bang

Material: Concrete, Demolition Leftover Concrete
Size: S: $\varnothing 34 \times H200$ mm /
M: $\varnothing 34 \times H400$ mm /
L: $\varnothing 34 \times H1000$ mm
Weight: 0.4 / 0.9 / 1.7 kg
Cord: Black, 3m / 3m / 2m
Light Source: G4 LED
Colour Temperature: 3000 K
Wattage: 2 W
Voltage: 220-240 V
Colour: Cement Grey



Pendant Lamp • Qie

Material: Concrete, Bamboo,
Demolition Leftover Concrete
Size: S: Ø96×H162 / M: Ø96×H178 /
L: Ø96×H219 mm
Weight: 0.9 / 1 / 1 kg
Cord: Black, 3 m
Light Source: E27 LED
Colour Temperature: 3000 K
Wattage: 3 W
Voltage: 100-240 V
Colour: Cement Grey
Accessory Colour: Natural



Pendant Lamp • Shang

Material: Concrete, Bamboo,
Demolition Leftover Concrete
Size: Ø220×H240 mm
Weight: 1.5 kg
Cord: Black, 3 m
Light Source: E27 LED
Colour Temperature: 2700-3000 K
Wattage: 3 W
Voltage: 100-240 V
Colour: Cement Grey
Accessory Colour: Natural



Pendant Lamp • U

Material: Concrete,
Demolition Leftover Concrete
Size: Ø96×H180 mm
Weight: 1.4 kg
Cord: Black, 3 m
Light Source: E27 LED
Colour Temperature: 2700-3000 K
Wattage: 3 W
Voltage: 100-240 V
Colour: Cement Grey
Accessory Colour: Black



Pendant Lamp • Shang

Material: Concrete, Aluminum,
Demolition Leftover Concrete
Size: Ø220×H240 mm
Weight: 1.6 kg
Cord: Black, 3 m
Light Source: E27 LED
Colour Temperature: 2700-3000 K
Wattage: 3 W
Voltage: 100-240 V
Colour: Cement Grey
Accessory Colour: Black



Pendant Lamp • Ren
Material: Concrete, Brass,
Demolition Leftover Concrete
Size: Ø200×H317 mm
Weight: 2.3 kg
Cord: Black, 3 m
Steel Wire: 3 m
Light Source: E27 LED
Colour Temperature: 3200 K
Wattage: 7 W
Voltage: 220 V
Colour: Cement Grey
Accessory Colour: Brass



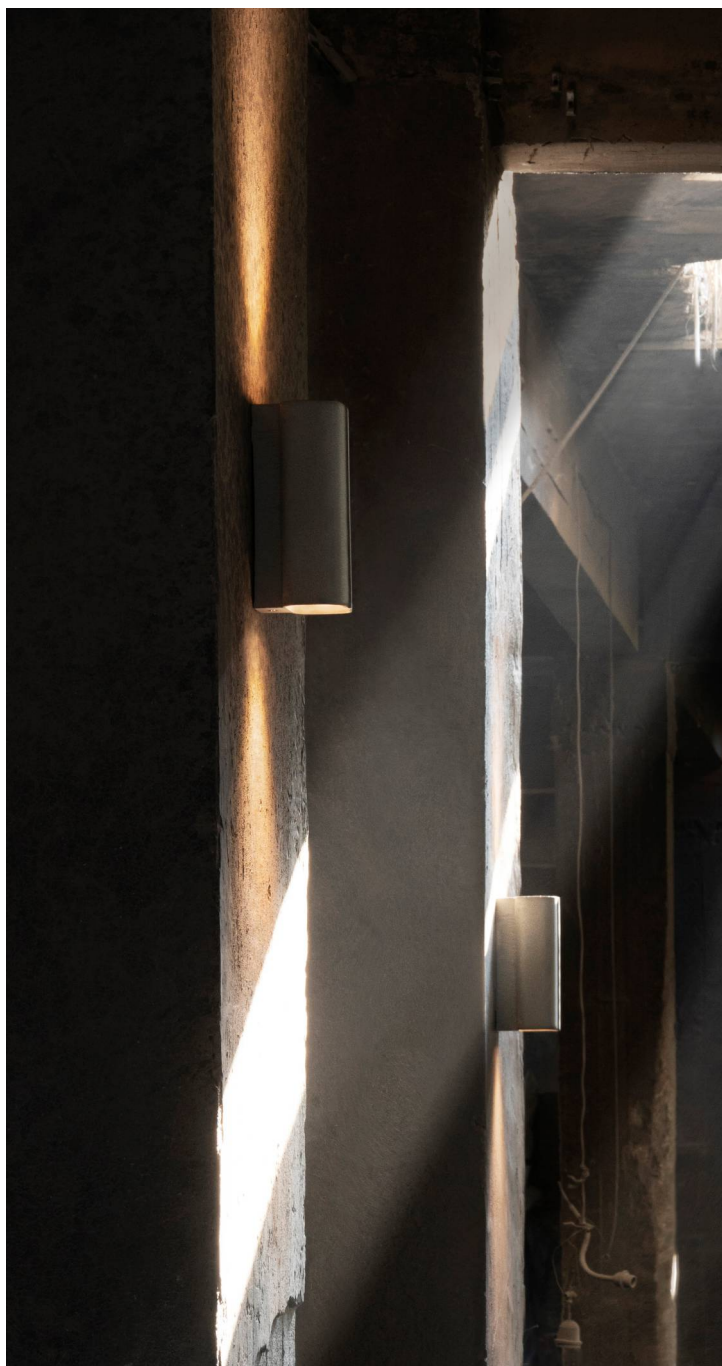
Pendant Lamp • Ren
Material: Concrete, Brass,
Demolition Leftover Concrete
Size: Ø400×H210 mm
Weight: 3.7 kg
Cord: Black, 3 m
Steel Wire: 3 m
Light Source: E27 LED
Colour Temperature: 3200 K
Wattage: 7 W
Voltage: 220 V
Colour: Cement Grey
Accessory Colour: Brass



Pendant Lamp • Ren
Material: Concrete, Brass,
Demolition Leftover Concrete
Size: Ø300×H260 mm
Weight: 2.8 kg
Cord: Black, 3 m
Steel Wire: 3 m
Light Source: E27 LED
Colour Temperature: 3200 K
Wattage: 7 W
Voltage: 220 V
Colour: Cement Grey
Accessory Colour: Brass



Pendant Lamp • Zhong
Material: Concrete, Aluminum,
Demolition Leftover Concrete
Size: Ø180×H200 mm
Weight: 1.1 kg
Cord: Black, 3 m
Light Source: E27 LED
Colour Temperature: 2700-3000 K
Wattage: 3 W
Voltage: 100-240 V
Colour: Cement Grey
Accessory Colour: Black



Wall Lamp • Jiu

Material: Concrete, Aluminum,
Demolition Leftover Concrete
Size: 100×110×H240 mm
Weight: 2 kg
Light Source: E27 COB LED
Colour Temperature: 3000 K
Wattage: 3 W
Voltage: AC90-265 V
Colour: Cement Grey
Accessory Colour: Black



Spotlight • Lv

Material: Concrete, Aluminium
Demolition Leftover Concrete
Size: Ø66×H270 mm (lampshade: H190mm)
Weight: 0.7 kg
Light Source: COB LED GU10
Colour Temperature: 3000 K
Wattage: 5 W
Voltage: 100-240 V
Colour: Cement Grey
Accessory Colour: Black



Wall Lamp • Lv

Material: Concrete, Aluminium,
Demolition Leftover Concrete
Size: Ø66×H270 mm (lampshade: H190 mm)
Weight: 0.7 kg
Light Source: COB LED GU10
Colour Temperature: 3000 K
Wattage: 5 W
Voltage: 100-240V
Colour: Cement Grey
Accessory Colour: Black



Ceiling Lamp • Huan

Material: Concrete, Aluminum,
Demolition Leftover Concrete
Size: Ø138×H60 mm /
Ø274×H60 mm
Weight: 0.7 kg / 2 kg
Light Source: LED Panel
Colour Temperature: 3000 K / 6500 K
Wattage: 10 W / 30 W
Voltage: 220-240 V
Colour: Cement Grey
Accessory Colour: Black



Ceiling Lamp • Lv

Material: Concrete, Aluminium,
Demolition Leftover Concrete
Size: Ø66×H105 mm
Weight: 0.4 kg
Light Source: COB LED GU10
Colour Temperature: 3000 K
Wattage: 5 W
Voltage: 100-240 V
Colour: Cement Grey
Accessory Colour: Black



Wall Lamp • V (outdoor)

Material: Concrete, Aluminum,
Demolition Leftover Concrete
Size: 105×128×H108 mm
Weight: 1.3 kg
Light Source: AC LED
Colour Temperature: 3000 K
Wattage: 6 W
Voltage: 100-240 V
Waterproof rating: IP65
Colour: Cement Grey
Accessory Colour: Black



Wall Lamp • Pin (outdoor)

Material: Concrete, Aluminum, Acrylic,
Demolition Leftover Concrete

Size: S: Ø160 × H43 mm /
L: Ø260 × H60 mm

Weight: 0.7 kg / 1.4 kg

Cord: Black, 0.9 m

Light Source: AC LED

Colour Temperature: 3000 K

Wattage: 3 W

Voltage: 220-240 V

Waterproof rating: IP65

Colour: Cement Grey



Wall Lamp • D (outdoor)

Material: Concrete, Aluminum,
Demolition Leftover Concrete

Size: S: 82 × 82 × H60 mm /
M: 82 × 82 × H160 mm /
L: 82 × 82 × H260 mm

Weight: 0.4 / 1.2 / 1.3 kg

Light Source: AC LED

Colour Temperature: 3000 K

Wattage: 3 W

Voltage: 220-240 V

Waterproof rating: IP65

Colour: Cement Grey

Accessory Colour: Black





Side Table • Ding (Square)
Material: Concrete, Aluminium,
Demolition Leftover Concrete
Size: 600×700×H350 mm
Weight: 28 kg
Colour: Cement Grey
Tabletop Colour: Black / White



Side Table • Ding (Round)
Material: Concrete, Aluminium,
Demolition Leftover Concrete
Size: Ø600×H450 mm
Weight: 25 kg
Colour: Cement Grey
Tabletop Colour: Black / White



Table • Ding (Square)
Material: Concrete, Aluminium,
Demolition Leftover Concrete
Size: 600×700×H750 mm
Weight: 29 kg
Colour: Cement Grey
Tabletop Colour: Black



Table • Ding (Square)
Material: Concrete, Aluminium,
Demolition Leftover Concrete
Size: 600×700×H750 mm
Weight: 29 kg
Colour: Cement Grey
Tabletop Colour: White



Table • Ding (Round)
Material: Concrete, Aluminium,
Demolition Leftover Concrete
Size: Ø600×H750 mm
Weight: 26 kg
Colour: Cement Grey
Tabletop Colour: Black



Table • Ding (Round)
Material: Concrete, Aluminium,
Demolition Leftover Concrete
Size: Ø600×H750 mm
Weight: 26 kg
Colour: Cement Grey
Tabletop Colour: White



Bar Table • Ding
Material: Concrete, Aluminium,
Demolition Leftover Concrete
Size: Ø450×H1000 mm
Weight: 24 kg
Colour: Cement Grey
Tabletop Colour: Black



Bar Table • Ding
Material: Concrete, Aluminium,
Demolition Leftover Concrete
Size: Ø450×H1000 mm
Weight: 24 kg
Colour: Cement Grey
Tabletop Colour: White



Table • Ding (outdoor)

Material: Concrete, Aluminium,
Demolition Leftover Concrete
Size: Ø1200×H750 mm
Weight: 88 kg
Colour: Cement Grey
Tabletop Colour: Black



Table • Ding (outdoor)

Material: Concrete, Aluminium,
Demolition Leftover Concrete
Size: 1400×800×H750 mm
Weight: 84 kg
Colour: Cement Grey
Tabletop Colour: Black



Table • Ding (outdoor)

Material: Concrete, Aluminium,
Demolition Leftover Concrete
Size: 2200×900×H750 mm
Weight: 175 kg
Colour: Cement Grey
Tabletop Colour: Black



Leisure Chair • K

Material: Aluminium
Size: 715×666×H732 mm
(Seat: H350 mm)
Weight: 7.7 kg
Colour: Black / White





Chair • K

Material: Aluminium
Size: 522×485×H752 mm
(Seat: H430 mm)
Weight: 5.5 kg
Colour: White



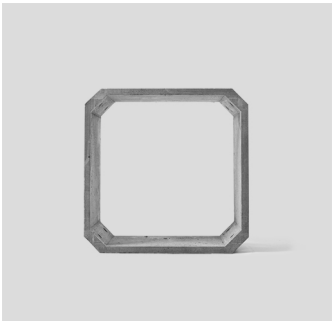
Chair • K

Material: Aluminium
Size: 522×485×H752 mm
(Seat: H430 mm)
Weight: 5.5 kg
Colour: Black



Chair • H

Material: Concrete, Demolition Leftover Concrete,
Powder Coated Steel
Size: 580×550×H760 mm
Weight: 12 kg
Seat Colour: Cement Grey
Accessory Colour: Black



Side Table • Kou

Material: Concrete,
Demolition Leftover Concrete
Size: 360×250×H360 mm
Weight: 11 kg
Colour: Cement Grey



Bar Stool • A

Material: Concrete, Demolition Leftover Concrete,
Powder Coated Steel
Size: 350×350×H480 mm
Weight: 9.5 kg
Seat Colour: Cement Grey
Accessory Colour: Black



Bar Stool • A

Material: Concrete, Demolition Leftover Concrete,
Powder Coated Steel
Size: 465×465×H765 mm
Weight: 11 kg
Seat Colour: Cement Grey
Accessory Colour: Black



Side Table • Bai

Material: Concrete, Demolition Leftover Concrete,
Powder Coated Steel
Size: S: Ø500×H450 / M:Ø400×H520 /
L: 400×450×H600 mm
Weight: 25 / 23 / 24.5 kg
Colour: Cement Grey
Tabletop Colour: Black / Red / White



Table • Nian

Material: Concrete, Demolition Leftover Concrete,
Powder Coated Steel
Size: 1800/ 2000/ 2500×800×H740 mm
Weight: 138 / 152 / 209 kg
Tabletop Colour: Cement Grey
Accessory Colour: Black



Card Holder / Pen Stand • Jing

Material: Concrete,
Demolition Leftover Concrete
Size: 100×100×H50 mm
Weight: 0.8 kg
Colour: Cement Grey



Bookend • Men

Material: Concrete,
Demolition Leftover Concrete
Size: 100×120×H70 mm
Weight: 2.2 kg
Colour: Cement Grey



Tissue Box • Hui Series

Material: Concrete,
Demolition Leftover Concrete
Size: M: 185×125×H92 mm /
L : 230×125×H72 mm
Weight: 1.4 kg / 1.4 kg
Colour: Cement Grey



Storage Tray • Hui Series

Material: Concrete,
Demolition Leftover Concrete
Size: S: 245×110×H14 mm /
L: 325×180×H14 mm
Weight: 0.6 kg / 1.2 kg
Colour: Cement Grey



水磨石系列 TERRAZZO COLLECTION

Terrazzo Collection regenerates the material originated from Yunfu, China, one of the world's largest stone processing industrial bases. Relying on the large amount of traditional stone industries, Terrazzo once achieved a rapid development and became a subdivision industry in China. The fine and beautiful patterns of terrazzo, one of the features of localization, has not only described the mediocre life took place in China before the 1980s, but also witnessed every individual in this old stone production system struggle to survive under the impact of economic globalization and development of science and technology.

Bentu tries to get into everyday life with rational design by returning to the most primitive and profound form of terrazzo in China and redefining the manufacture technique with modern design. When achieving the mass production that meets the daily need and aesthetic style of modern life, we desire to see whether this kind of attempt bring in any innovation and vitality to this old system again.



Pendant Lamp • Planet

Material: Concrete, Leftover Stone Aggregate, Glass, Aluminum

Size: Ø450×H155 mm

Weight: 3.2 kg

Cord: 3 m

Light Source: G4 LED

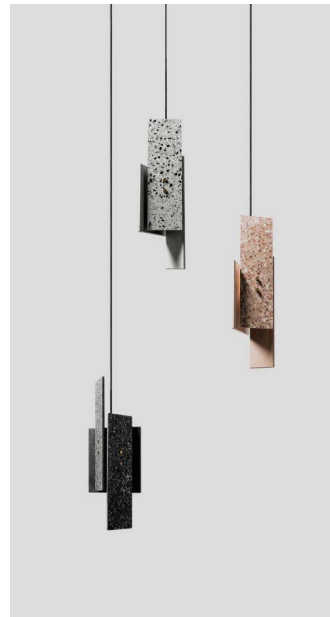
Colour Temperature: 3000 K

Wattage: 2 W

Voltage: 220-240 V

Colour: Black / White / Pink

Accessory Colour: Brass



Pendant Lamp • Piece

Material: Concrete, Leftover Stone Aggregate, Stainless Steel, Brass

Size: 177×163×H532 mm

Weight: 3.4 kg

Cord: Black, 3 m

Light Source: E27 LED

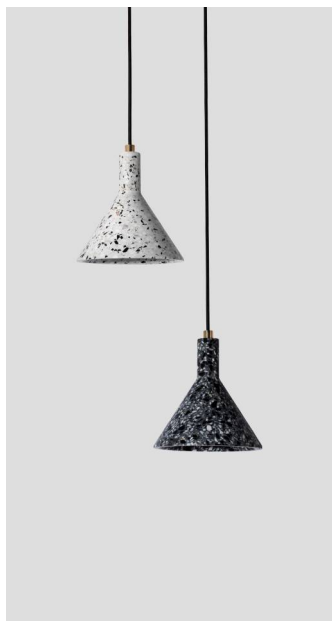
Colour Temperature: 2700-3000 K

Wattage: 3 W

Voltage: 100-240 V

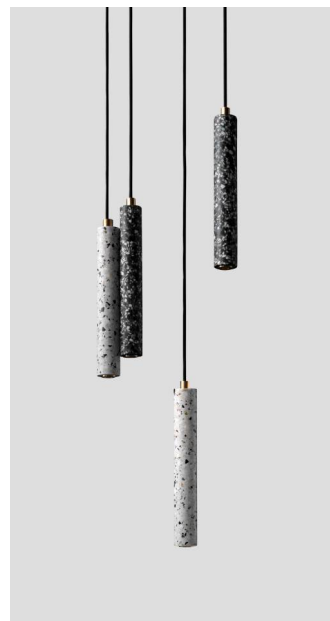
Colour: Black / White / Pink

Accessory Colour: Brass



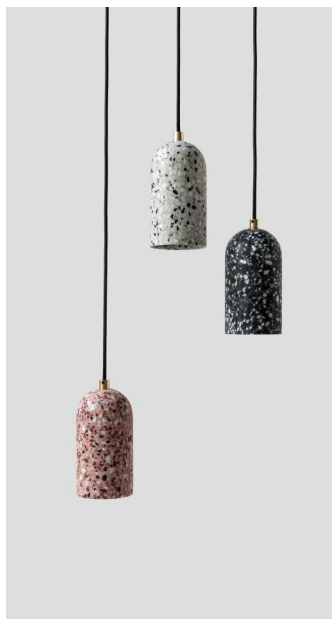
Pendant Lamp • Jin

Material: Concrete, Leftover Stone Aggregate, Brass
 Size: Ø180×H210 mm
 Weight: 1.7 kg
 Cord: Black, 3 m
 Light Source: E27 LED
 Colour Temperature: 2700-3000 K
 Wattage: 3 W
 Voltage: 100-240 V
 Colour: Black / White
 Accessory Colour: Brass



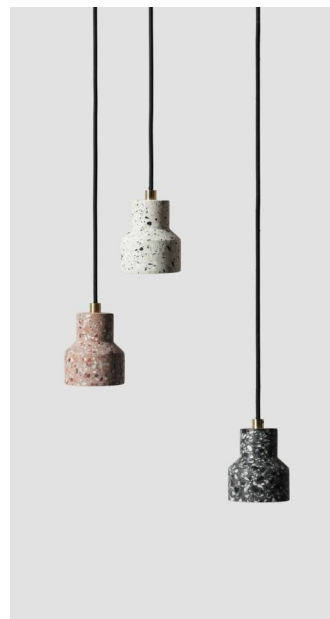
Pendant Lamp • Bang

Material: Concrete, Leftover Stone Aggregate, Brass
 Size: Ø45×H310 mm
 Weight: 1.2 kg
 Cord: Black, 3 m
 Light Source: G9 LED
 Colour Temperature: 3000 K
 Wattage: 2 W
 Voltage: 220-240 V
 Colour: Black / White
 Accessory Colour: Brass



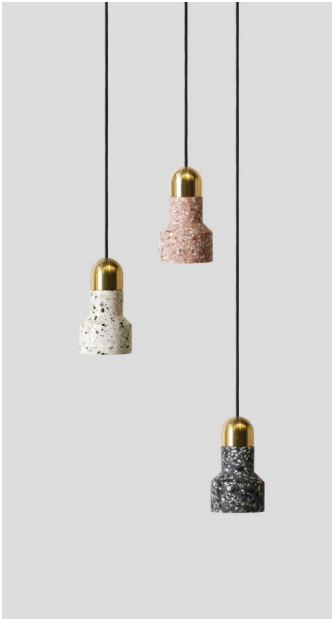
Pendant Lamp • U

Material: Concrete, Leftover Stone Aggregate, Brass
 Size: Ø96×H185 mm
 Weight: 1.6 kg
 Cord: Black, 3 m
 Light Source: E27 LED
 Colour Temperature: 2700-3000 K
 Wattage: 3 W
 Voltage: 100-240 V
 Colour: Black / White / Pink
 Accessory Colour: Brass



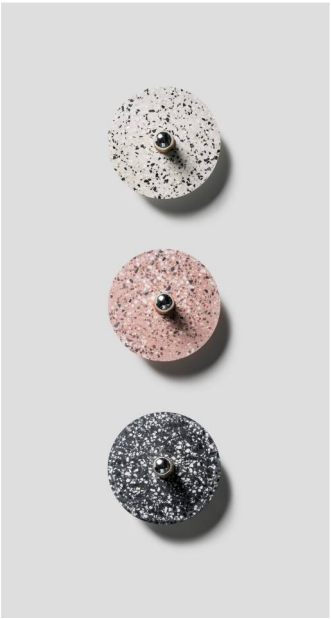
Pendant Lamp • Tu

Material: Concrete, Leftover Stone Aggregate, Brass
 Size: Ø96×H104 mm
 Weight: 0.9 kg
 Cord: Black, 3 m
 Light Source: E27 LED
 Colour Temperature: 2700-3000 K
 Wattage: 3 W
 Voltage: 100-240 V
 Colour: Black / White / Pink
 Accessory Colour: Brass



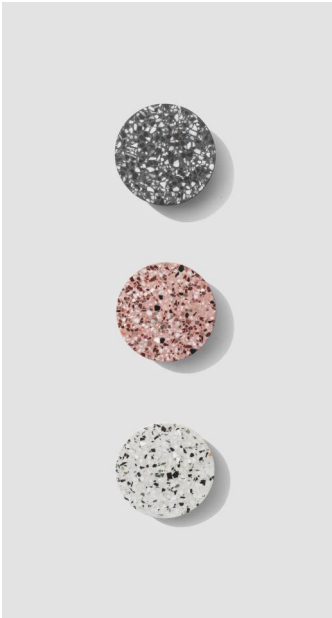
Pendant Lamp • Qie

Material: Concrete, Leftover Stone Aggregate, Brass
Size: Ø92×H168 mm
Weight: 1.1 kg
Cord: Black, 3 m
Light Source: E27 LED
Colour Temperature: 2700-3000 K
Wattage: 3 W
Voltage: 100-240 V
Colour: Black / White / Pink
Accessory Colour: Brass



Wall Lamp • Gu

Material: Concrete, Leftover Stone Aggregate, Aluminum
Size: Ø278×H135 mm
Weight: 1.1 kg
Light Source: E27 LED
Colour Temperature: 3000 K
Wattage: 3 W
Voltage: 220 V
Colour: Black / White / Pink



Wall Lamp • Pin(outdoor)

Material: Concrete, Leftover Stone Aggregate, Acrylic, Aluminum
Size: S: Ø160×H42 mm /
L: Ø260×H60 mm
Weight: 0.7 / 1.4 kg
Cord: Black, 0.9 m
Light Source: AC LED
Colour Temperature: 3000 K
Wattage: 3 W
Voltage: 220-240 V
Waterproof rating: IP65
Colour: Black / White / Pink

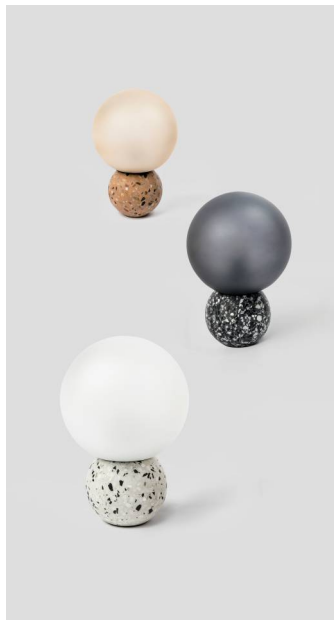


Table Lamp • 8

Material: Concrete, Leftover Stone Aggregate, Glass

Size: Ø200×H295 mm

Weight: 4 kg

Cord: Black, 1.7 m

Light Source: E27 LED

Colour Temperature: 2700 K

Wattage: 3 W

Voltage: 220-240 V

Colour: Black / White / Earthy Red



Floor Lamp • 8

Material: Concrete, Leftover Stone Aggregate, Glass, Aluminum

Size: Ø200×H1770 mm

Weight: 19 kg

Cord: Black, 2.8 m

Light Source: E27 LED

Colour Temperature: 2700 K

Wattage: 3 W

Voltage: 220-240 V

Colour: Black





Side Table • Ding
Material: Concrete, Leftover Stone Aggregate,
Aluminium
Size: Ø600×H440 mm
Weight: 22 kg
Colour: Black
Accessory Colour: Black



Table • I (Round)
Material: Concrete, Leftover Stone Aggregate,
Powder Coated Steel
Size: Ø500×H750 mm
Weight: 16.5 kg
Colour: Black
Accessory Colour: Black



Side Table • Ding
Material: Concrete, Leftover Stone Aggregate,
Aluminium
Size: Ø450×H450 mm / Ø450×H600 mm
Weight: 14 kg / 15 kg
Colour: Black
Accessory Colour: Black



Table • I (Square)
Material: Concrete, Leftover Stone Aggregate,
Powder Coated Steel
Size: 600×600×H750 mm
Weight: 24 kg
Colour: Black
Accessory Colour: Black



Side Table • Ding
Material: Concrete, Leftover Stone Aggregate,
Aluminium
Size: Ø600×H440 mm
Weight: 22 kg
Colour: White
Accessory Colour: White



Table • I (Round)
Material: Concrete, Leftover Stone Aggregate,
Powder Coated Steel
Size: Ø700×H750 mm
Weight: 32 kg
Colour: Black
Accessory Colour: Black



Side Table • Ding
Material: Concrete, Leftover Stone Aggregate,
Aluminium
Size: Ø450×H450 mm / Ø450×H600 mm
Weight: 14 kg / 15 kg
Colour: White
Accessory Colour: White



Table • Gong
Material: Concrete, Leftover Stone Aggregate,
Powder Coated Steel
Size: Ø1000×H750 mm
Weight: 85 kg
Colour: Black
Accessory Colour: Black



Table • I (Round)

Material: Concrete, Leftover Stone Aggregate,
Powder Coated Steel

Size: Ø500×H750 mm

Weight: 16.5 kg

Colour: White

Accessory Colour: White



Table • I (Square)

Material: Concrete, Leftover Stone Aggregate,
Powder Coated Steel

Size: 600×600×H750 mm

Weight: 24 kg

Colour: White

Accessory Colour: White



Table • I (Square)

Material: Concrete, Leftover Stone Aggregate,
Powder Coated Steel

Size: Ø700×H750 mm

Weight: 32 kg

Colour: White

Accessory Colour: White



Table • Gong

Material: Concrete, Leftover Stone Aggregate,
Powder Coated Steel

Size: Ø1000×H750 mm

Weight: 85 kg

Colour: White

Accessory Colour: White





Side Table • 8

Material: Concrete, Leftover Stone Aggregate
Size: Ø500×H503 mm
Weight: 31.5 kg
Colour: White



Side Table • 8

Material: Concrete, Leftover Stone Aggregate
Size: Ø500×H503 mm
Weight: 31.5 kg
Colour: Black



Bar Stool • Ping

Material: Concrete, Leftover Stone Aggregate,
Powder Coated Steel
Size: Ø540×H740 mm (Seat Size: Ø400 mm)
Weight: 13.5 kg
Colour: White
Accessory Colour: White



Bar Stool • Ping

Material: Concrete, Leftover Stone Aggregate,
Powder Coated Steel
Size: Ø540×H740 mm (Seat Size: Ø400 mm)
Weight: 13.5 kg
Colour: Black
Accessory Colour: Black





Plant Pot • Yuan

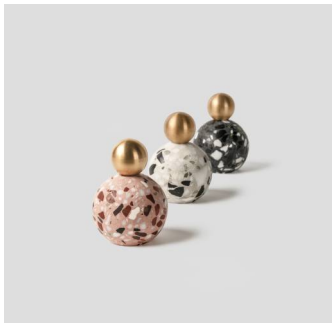
Material: Concrete, Leftover Stone Aggregate

Size: S: Ø118×H130 mm /

M: Ø144×H145 mm

Weight: 1.3 / 1.8 kg

Colour: Black / White / Pink



Paperweight • 8

Material: Concrete, Brass,
Leftover Stone Aggregate

Size: (single) Ø60×H83 mm

Weight: (single) 1 kg

Colour: White / Black / Pink (each set of 3)



Clothes Tree • 8

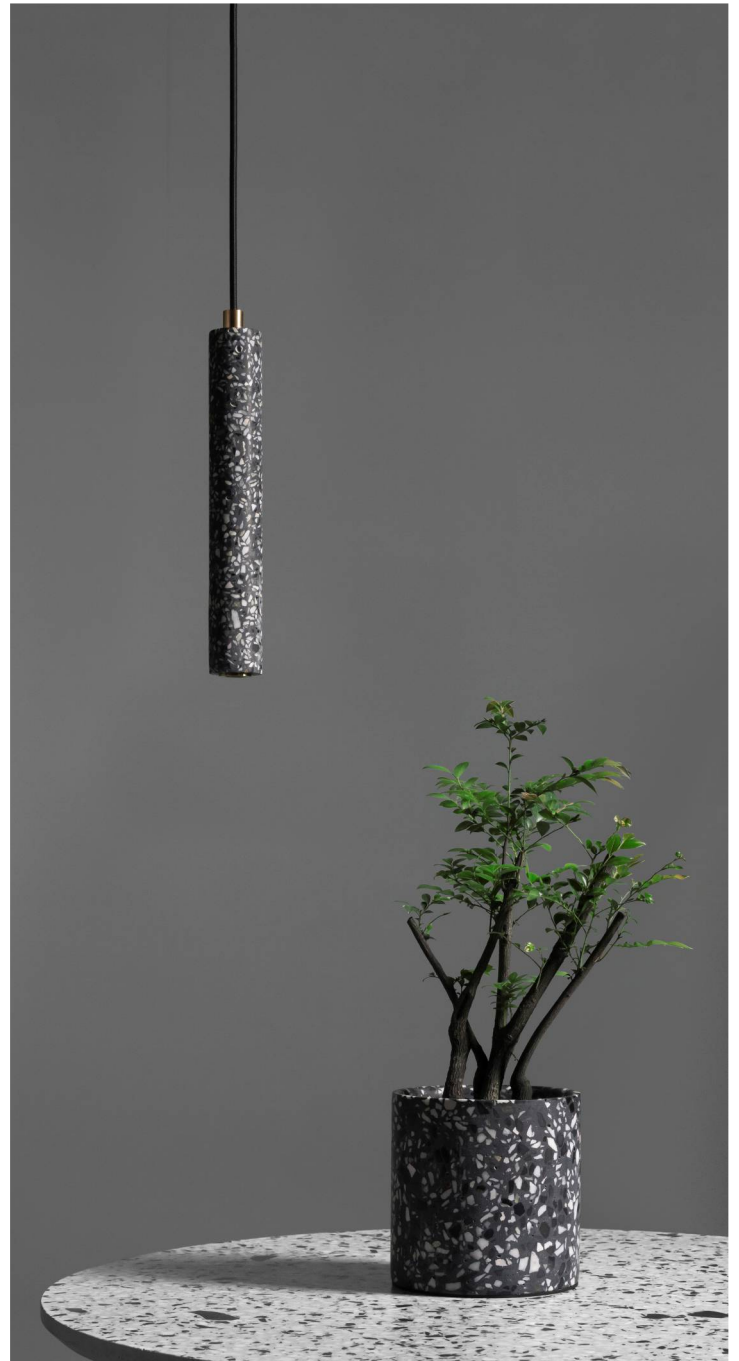
Material: Concrete, Aluminum,
Leftover Stone Aggregate

Size: Ø230×H1750 mm

Weight: 17.5 kg

Base Colour: Black

Accessory Colour: Black





Lavabo • Hui Series

Material: Concrete, Leftover Stone Aggregate

Size: Ø408×H130 mm

Drain Hole: Ø45 mm

Weight: 18 kg

Colour: White



Lavabo • Hui Series

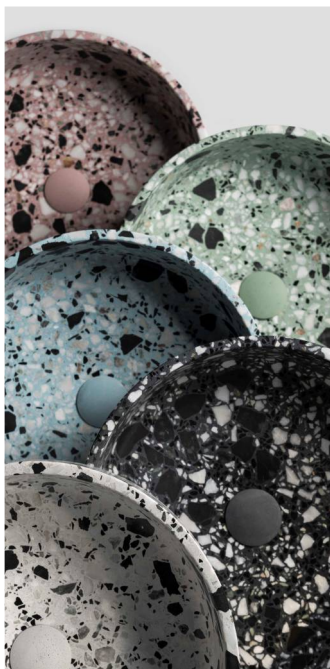
Material: Concrete, Leftover Stone Aggregate

Size: Ø408×H130 mm

Drain Hole: Ø45 mm

Weight: 18 kg

Colour: Black



Lavabo • Hui Series

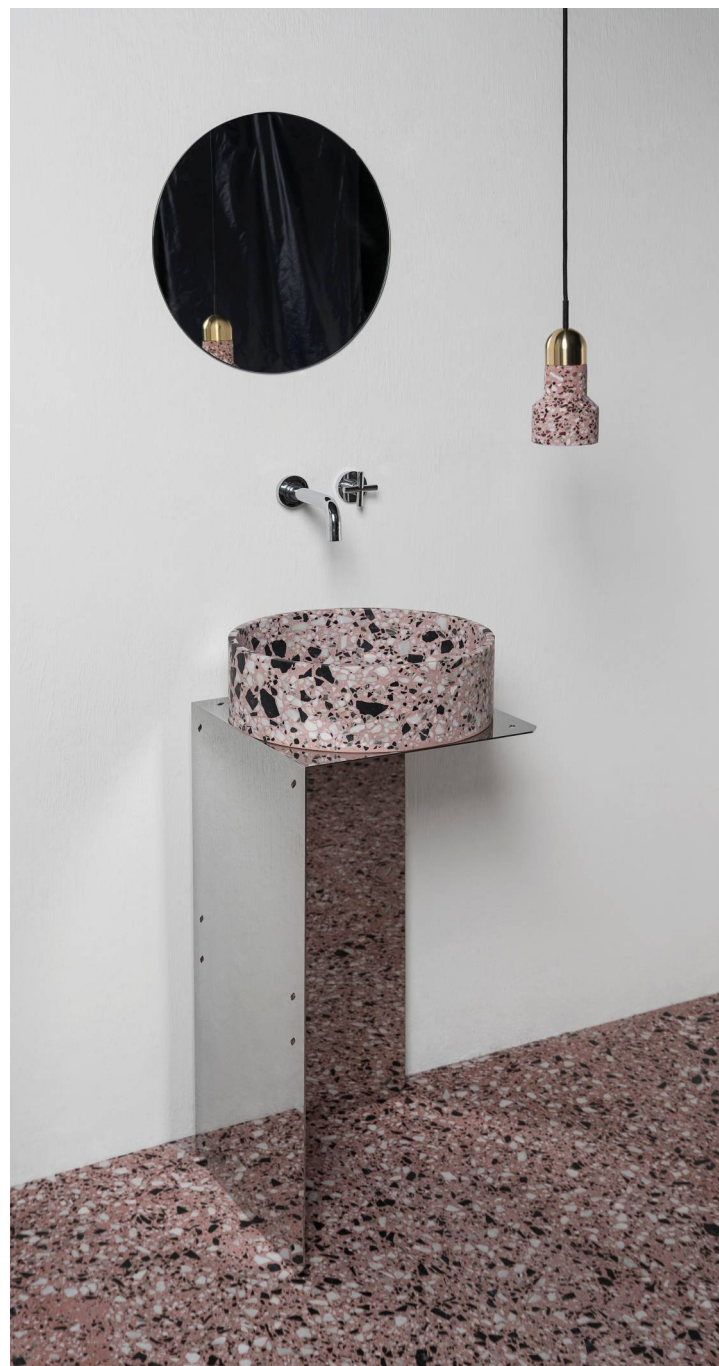
Material: Concrete, Leftover Stone Aggregate

Size: Ø408×H130 mm

Drain Hole: Ø45 mm

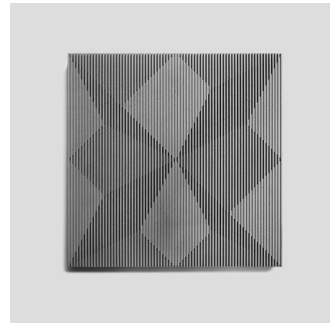
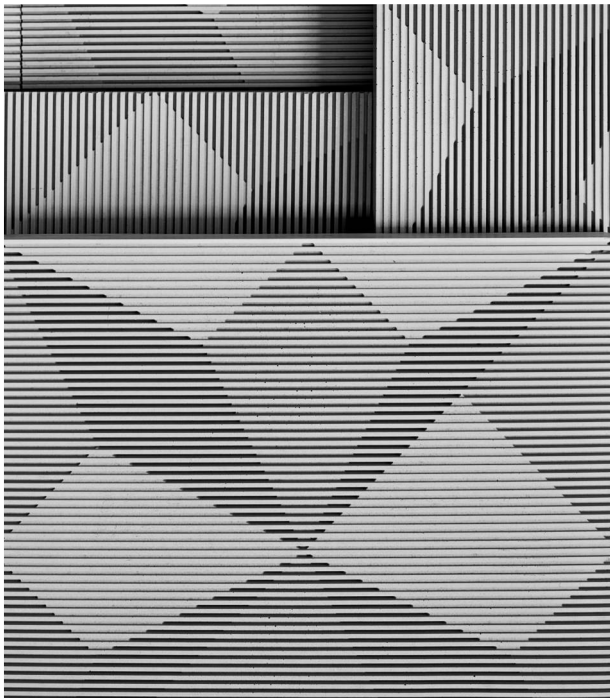
Weight: 18 kg

Colour: Pink / Blue / Green



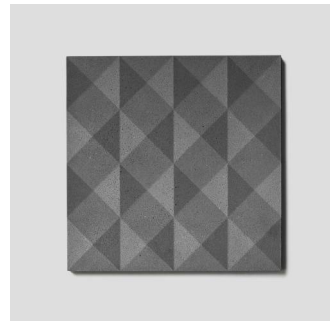
建材 / 砼工石造 BENTU SURFACE

Bentu Surface grew out of the crossover experiments designed and performed by design institution Bentu. With the curiosity towards the world and the equal care for all - all the raw materials, techniques and cultures that make up things, a group of people who fiddle with concrete would like to redefine the value of building materials upon living space. By perceiving the feelings, temperature, textures, colors of materials and exploring the arts and techniques, we make each material return to its nature.



Decorative Tiles • Shadow

Material: Concrete, Ceramic Waste Aggregate
Size: 298×298×H12 mm
Weight: 2.2 kg
Colour: Grey White / Grey / Dark Grey



Decorative Tiles • Zuan

Material: Concrete, Ceramic Waste Aggregate
Size: 300×300×H15 mm
Weight: 2.4 kg
Colour: Grey White / Grey / Dark Grey



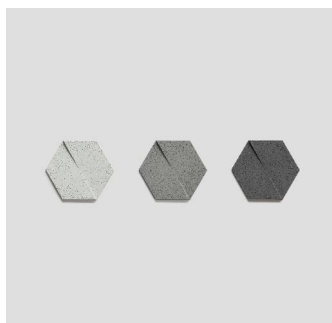
Decorative Tiles • Wave

Material: Concrete, Ceramic Waste Aggregate
Size: 298×298×H28 mm
Weight: 3.5 kg
Colour: Grey White / Grey / Dark Grey



Decorative Tiles • Ao

Material: Concrete, Ceramic Waste Aggregate
Size: 298×298×H19 mm
Weight: 3 kg
Colour: Grey White / Grey / Dark Grey



Decorative Tiles • Ling

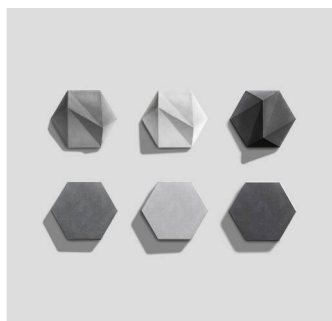
Material: Concrete, Ceramic Waste Aggregate

Size: 242×280×H18 mm

weight: 1.2 kg

Colour: Grey White / Grey / Dark Grey

ELLE
DECO



Decorative Tiles • San (3D / flat)

Material: Concrete, Ceramic Waste Aggregate

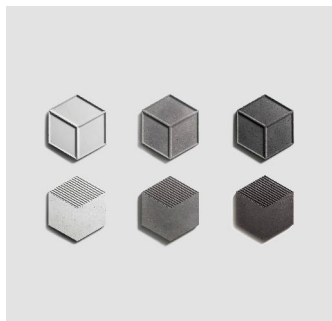
Size: 3D: 242×280×H37 mm /

flat: 242×280×H19 mm

weight: 2.1 kg / 1.5 kg

Colour: Grey White / Grey / Dark Grey

ELLE
DECO



Decorative Tiles • Six 1 / Six 2

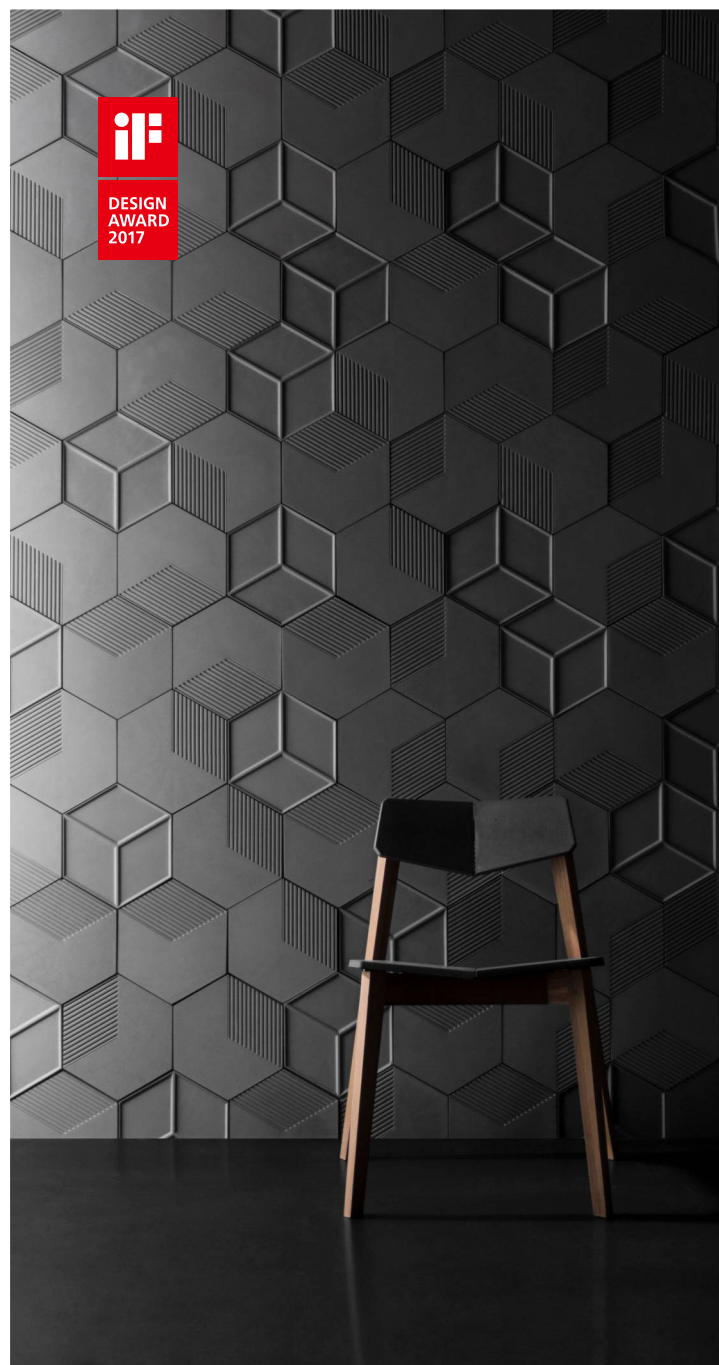
Material: Concrete, Ceramic Waste Aggregate

Size: 242×280×H13 mm /

242×280×H13 mm

Weight: 1.3 kg / 1.3 kg

Colour: Grey White / Grey / Dark Grey





Decorative Tiles • L-3 (Single Colour)
Material: Concrete, Ceramic Waste Aggregate
Size: $298 \times 298 \times H15$ mm
weight: 2.2 kg
Colour: Grey White / Grey / Dark Grey /
Pink / Dark Blue



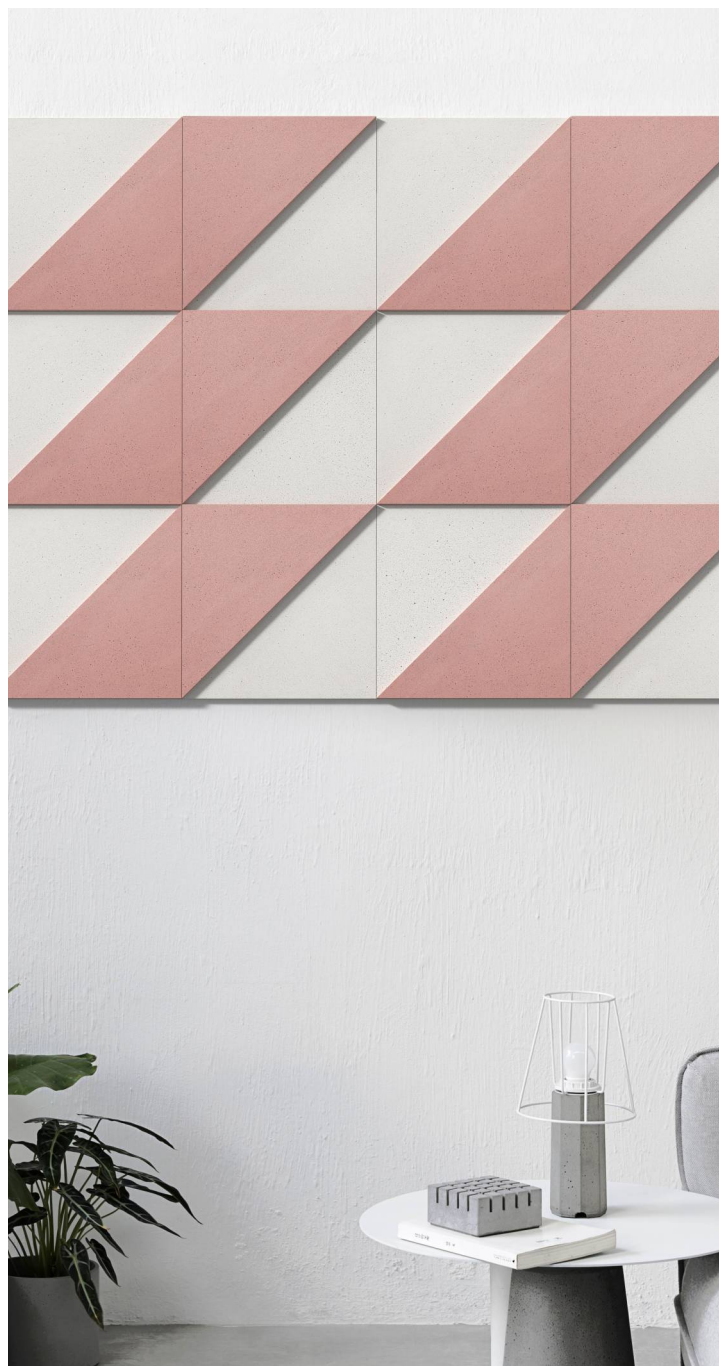
Decorative Tiles • L-3 (Dual Colour)
Material: Concrete, Ceramic Waste Aggregate
Size: $298 \times 298 \times H15$ mm
weight: 2.2 kg
Colour: Grey White + Pink



Decorative Tiles • L-3 (Dual Colour)
Material: Concrete, Ceramic Waste Aggregate
Size: $298 \times 298 \times H15$ mm
weight: 2.2 kg
Colour: Grey White + Dark Blue



Decorative Tiles • L-3 (Dual Colour)
Colour: Grey White + Dark Grey
Grey White + Grey
Dark Grey + Grey
Dark Blue + Pink





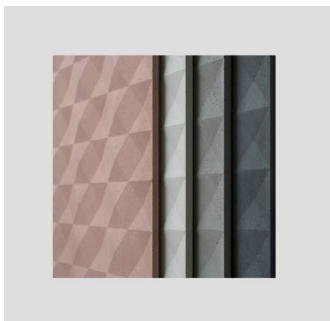
Concrete Boards • O

Material: Concrete, Ceramic Waste Aggregate
Size: 1200×600×H14 mm
weight: 17 kg
Colour: Grey White / Grey / Dark Grey / Earthy Red



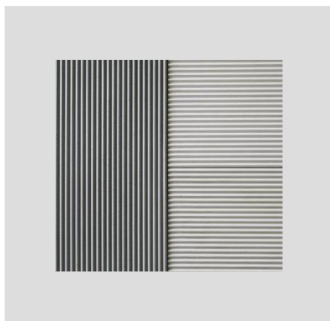
Concrete Boards • zuan

Material: Concrete, Ceramic Waste Aggregate
Size: 1200×600×H16.5 mm
weight: 17 kg
Colour: Earthy Red



Concrete Boards • zuan

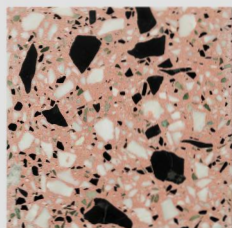
Material: Concrete, Ceramic Waste Aggregate
Size: 1200×600×H16.5 mm
weight: 17 kg
Colour: Grey White / Grey / Dark Grey



Concrete Tiles & Boards • Line

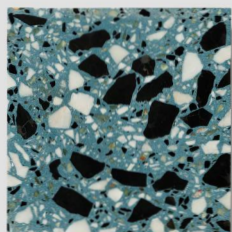
Material: Concrete, Ceramic Waste Aggregate
Size: 1200×600×H12 mm
Weight: 15 kg
Colour: Grey White / Grey / Dark Grey





Terrazzo Tiles & Boards • Xian

Material: Concrete, Leftover Stone Aggregate
Size: composite wall tile: 1200×600×H22 mm
composite floor tile: 1200×600×H17 mm
Weight: 13 kg / 18 kg
Colour: Pink



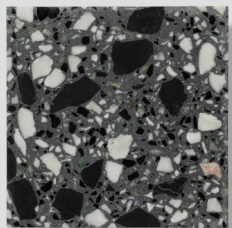
Terrazzo Tiles & Boards • Xian

Material: Concrete, Leftover Stone Aggregate
Size: composite wall tile: 1200×600×H22 mm
composite floor tile: 1200×600×H17 mm
Weight: 13 kg / 18 kg
Colour: Blue



Terrazzo Tiles & Boards • Xian

Material: Concrete, Leftover Stone Aggregate
Size: composite wall tile: 1200×600×H22 mm
composite floor tile: 1200×600×H17 mm
Weight: 13 kg / 18 kg
Colour: White



Terrazzo Tiles & Boards • Xian

Material: Concrete, Leftover Stone Aggregate
Size: composite wall tile: 1200×600×H22 mm
composite floor tile: 1200×600×H17 mm
Weight: 13 kg / 18 kg
Colour: Black



