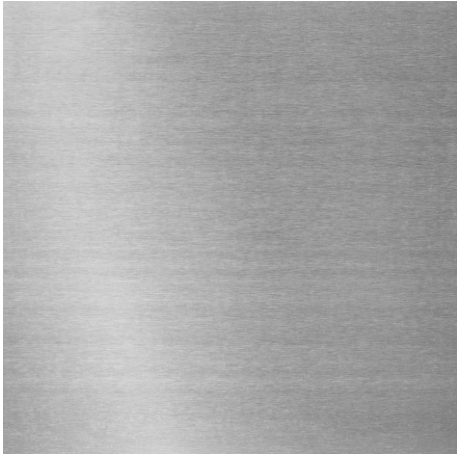
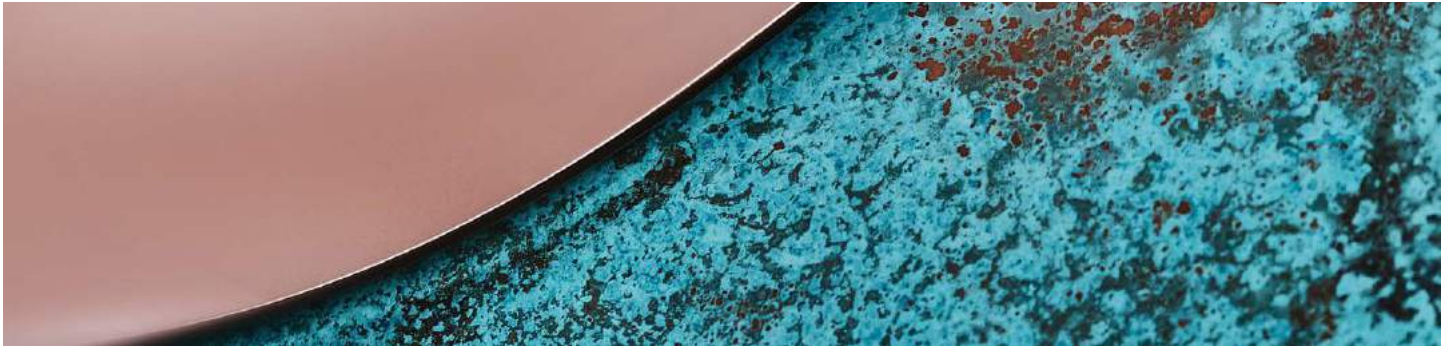


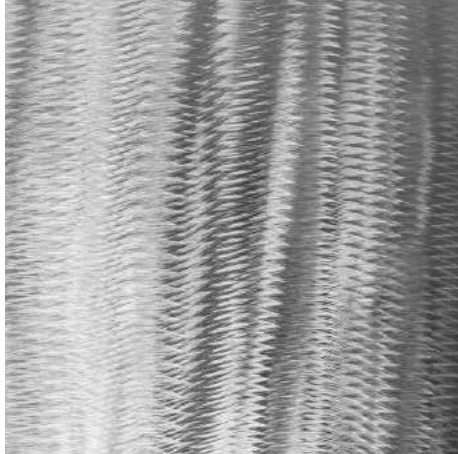
noom

MATERIALS &
FABRICS





Stainless steel



Hand brushed stainless steel



Burned steel



Brushed brass



Hammered brass



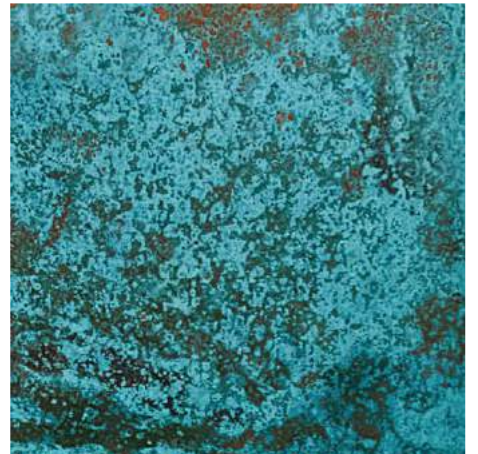
Rainbow zinc plating steel



Brushed copper



Hammered copper



Oxidized copper



Green Marble Verde Ocean



White Marble Statuario



Black Marble Alanya



Onyx



Travertino Chiaro Classic



Natural ashwood



Black stained ashwood



Brown stained ashwood



Walnut



Thermo Ash



Gray-brown stained ashwood



Black veneered wood



Blue veneered wood



Green veneered wood



18.77-ALPI Sottsass Dark Brown



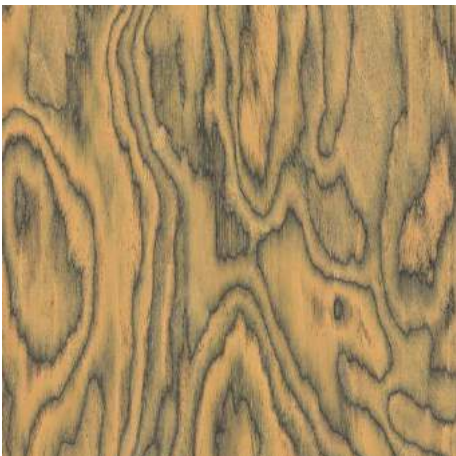
18.71 - ALPI Sottsass Red



Madrone wood veneer



18.73 - ALPI Sottsass Grey



18.70 - ALPI Sottsass Orange

FABRICS



Approved for: Gropius & Flock collections



Description

Baloo is a new collection from Toptextil consisting of 20 colour variations. The collection is stylish and luxurious, yet retains its cosy, soft character. Acrylic and cotton in the composition guarantee a natural look, while polyester is a guarantee of durability, strength and ease of maintenance.

Technical data

MATERIAL	93% Polyester, 6% Acrylic, 1% Cotton
WEIGHT	570 g/m2 ± 5%
WIDTH	142 ± 5 cm
MARTINDALE CYCLES	100000
PILLING RESISTANCE	4-5
COLOR FASTNESS TO RUBBING	Dry:5, Wet: 4-5
COLOR FASTNESS TO LIGHT	6
FLAME RETARDANCY	Cigarette test PN-EN 1021-1:2014-12
FABRIC FEATURES	OEKO-TEX STANDARD 100



2071



2072



2073



2074



2075



2076



2077



2078



2079



2080



2081



2082



2083



2084



2085



2086



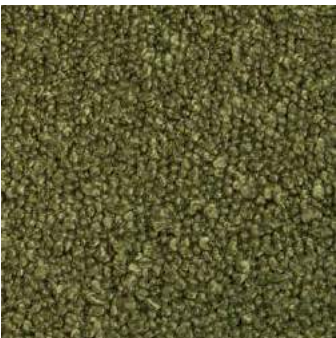
2087



2088

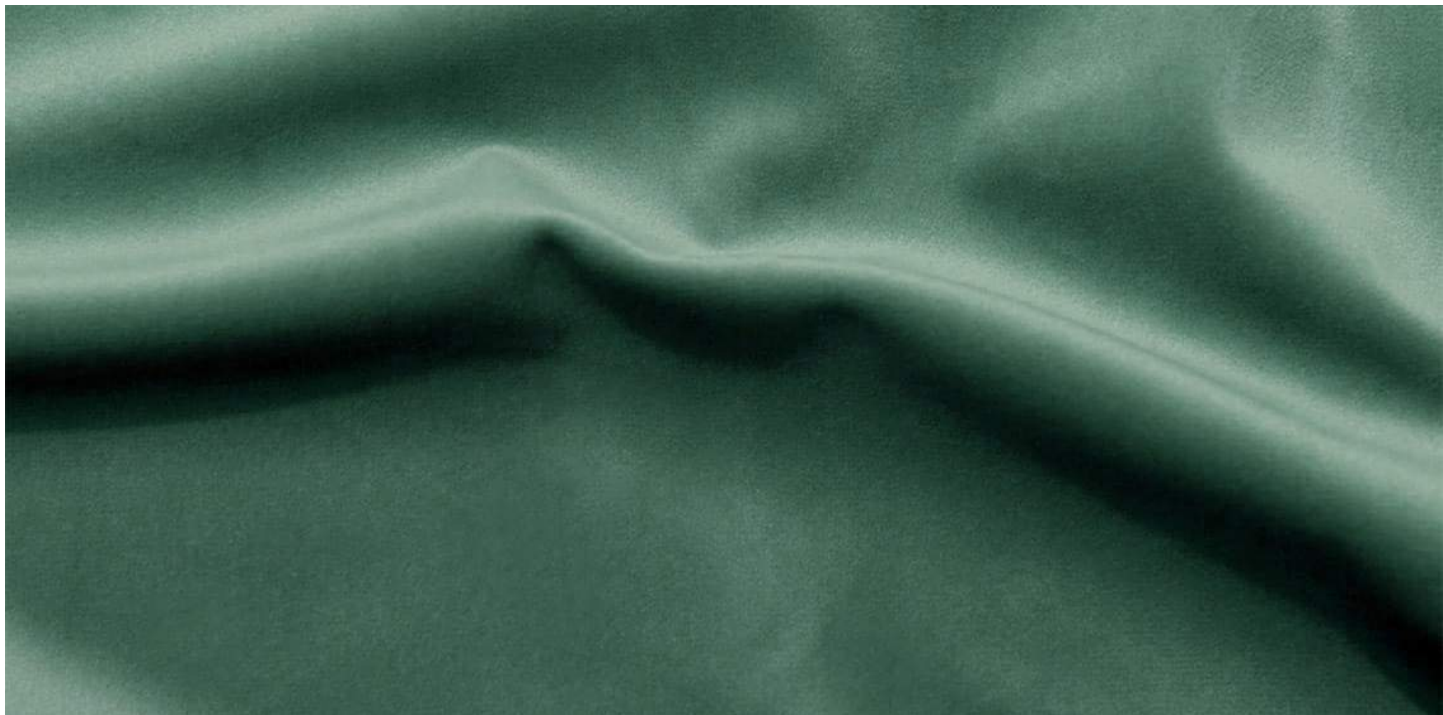


2089



2090

Approved for: Gropius collection



Description

Magic Velvet is a short pile upholstery fabric made from high-performing, water-resistant and flame-retardant polyester.

Technical data

MATERIAL	Polyester 100%
WEIGHT	300 g/m2
WIDTH	142 cm
MARTINDALE CYCLES	60 000
PILLING RESISTANCE	5
COLOR FASTNESS TO RUBBING	Dry: 4, Wet: 4
FLAME RETARDANCY	Cigarette test PN-EN 1021-1:2014-12
FABRIC FEATURES	Water Repellent, Petproof, certified according to OEKO-TEX STANDARD 100



2258



2257



2244



2253



2254



2252



2259



2245



2227



2237



2247



2225



2235



2236



2251



2243



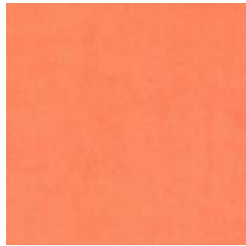
2202



2229



2213



2242



2231



2232



2212



2228



2215



2214



2205



2206



2234



2256



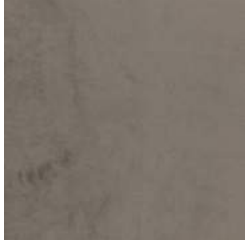
2250



2201



2210



2209



2208



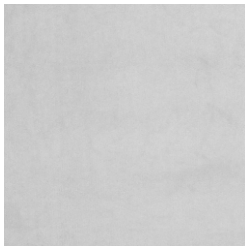
2207



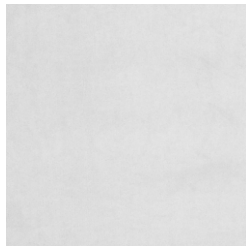
2217



2241



2240



2218



2239



2260



2226



2233



2224



2203



2211



2204



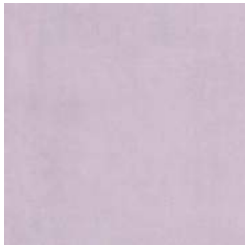
2216



2219



2246



2255



2249



2248



2230



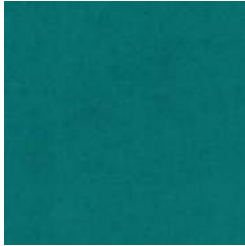
2238



2223



2221

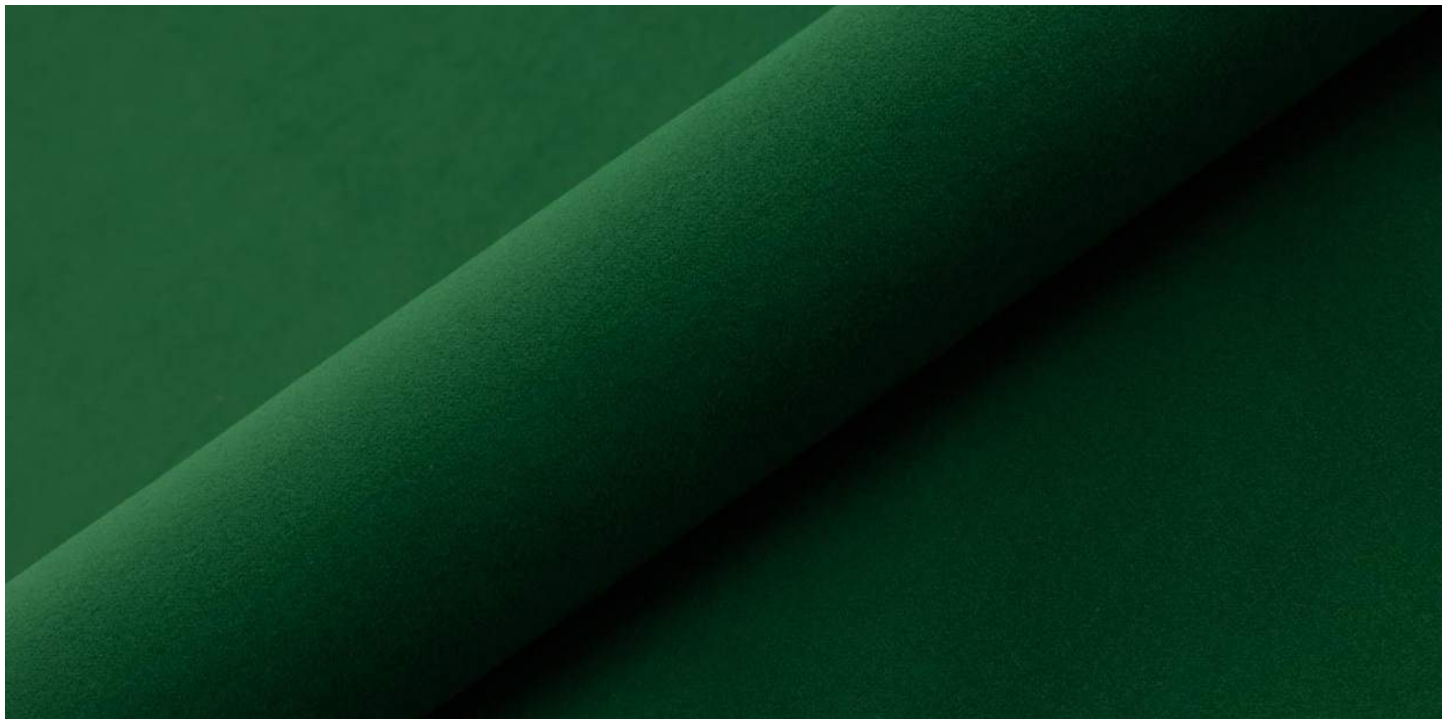


2220



2222

Approved for: Gropius collection



Description

Venus Velvet is a short pile upholstery fabric made from high-performing, water-resistant and flame-retardant polyester. With its matt, warm and natural-looking surface, satiny soft touch and opulent texture, Venus Velvet radiates classy elegance and comfort

Technical data

MATERIAL	Polyester 100%
WEIGHT	450 g/m2
WIDTH	142 cm
MARTINDALE CYCLES	90 000
PILLING RESISTANCE	4-5
COLOR FASTNESS TO RUBBING	Dry:5, Wet: 4-5
FLAME RETARDANCY	Cigarette test PN-EN 1021-1:2014-12
FABRIC FEATURES	Water Repellent, Petproof, certified according to OEKO-TEX STANDARD 100

				
2914	2915	2941	2940	2918
				
2934	2928	2927	2922	2935
				
2920	2924	2913	2937	2936
				
2916	2917	2933	2926	2919
				
2932	2925	2938	2939	2921
				
2929	2930	2912	2911	2923
				
2931				

Approved for: Gropius collection



Description

Collection "Medo" replicates the luxurious texture of genuine sheepskin, offering a combination of luxurious touch, beauty and durability. Crafted in Italy, it embodies the artistry of Italian craftsmanship. Moreover, Medo will not fade or lose its vibrant color when exposed to sunlight, ensuring that your furniture continues to look stunning. It's an excellent option for both residential and commercial spaces, adding a touch of elegance and sophistication to any room.

Technical data

MATERIAL	100% Polyester
WEIGHT	580 gr/m2 +/-5%
WIDTH	140 cm +/-2%
MARTINDALE CYCLES	100 000 rubs
PILLING RESISTANCE	4
COLOR FASTNESS TO RUBBING	5
COLOUR FASTNESS TO LIGHT	5
FLAME RETARDANCY	BS 5852 Source 0 DIN EN 1021-1



Approved for: Gropius & Flock collections



Description

Noble, densely woven woollen fabric to use in upholstery. It is naturally flame-retardant; passes the cigarette and matches test, according to British standards of fire resistance. It comes in a palette of more than 40 beautiful shades, including both the colours of nature (earth, grass, stone), subdued - beige, browns, creams and greys, as well as unusual for wool juicy, expressive strong colours: fuchsia, plum, eggplant and emerald green.

Technical data

MATERIAL	Wool 70%, Polyester 20%, Polyamide 5%, Other 5%
WEIGHT	325 g/m2
WIDTH	145 cm
MARTINDALE CYCLES	100 000
PILLING RESISTANCE	3-4
COLOR FASTNESS TO LIGHT	5
COLOR FASTNESS TO RUBBING	Dry: 4-5, Wet: 4
FLAME RETARDANCY	BS 5852 - 0, 1 EN 1021 - 1, 2 IMO FTP code 2010 part 8 US Cal. Bull. 117 EN 13773 - 5 ASTM E84 - 1



Biscuit-17



Calico-29



Cameo-21



Ivory-26



Linen-32



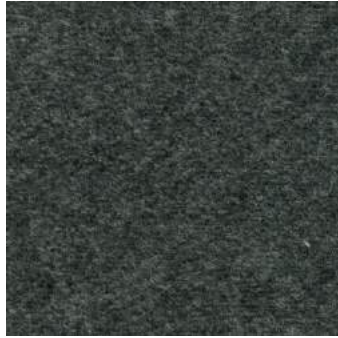
Chinchilla-08



Chestnut-25



Dust-22



Grey-02



Slate-47



Onyx-23



Pelican-57



Icicle-49



Haze-46



Pewter-04



Silver-03



Arctic-69



Cloud-16



Storm-48



Petrol-44



Turquoise-30



Indigo-14



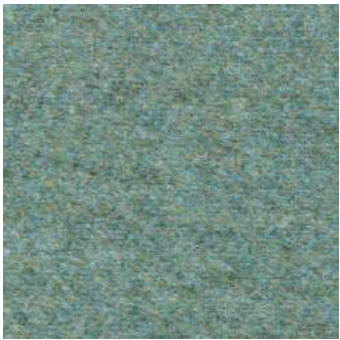
Emerald-18



Navy-37



Basil-43



Mist-45



Jade-42



Seagrass-64



Woodbine-27



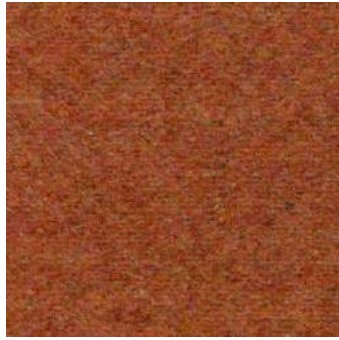
Lichen-24



Olive-31



Mustard-63



Rust-33



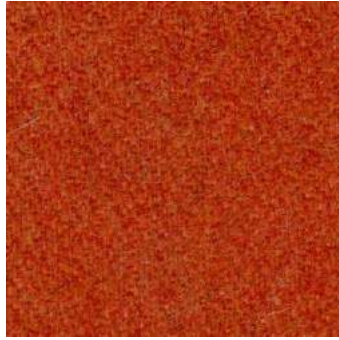
Terracota-15



Autumn-58



Burgundy-35



Sienna-62



Fire-28



Vino-34



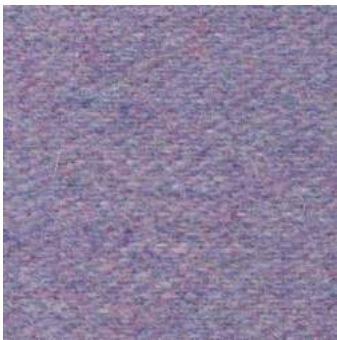
Aubergine-36



Sorbet-41



Orchid-40



Hyacinth-39



Irys-38



Eggplant-12



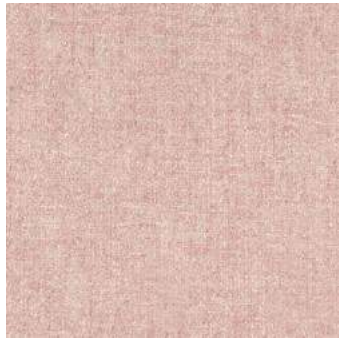
Fuchsia-20



Plum-19



Woolland-64



Woolland-03

Approved for: Gropius collection



Description

Ranger is a fabric with a very soft touch due to the use of a viscose chenille weave twisted with a linen yarn. Proposed as a simple plain base, with a natural composition and a slightly hinted texture, this fabric is a perfect choice for upholstery in regions where a hot climate prevails. Collection Ranger is available in 46 color variations, and is also washable.

Technical data

MATERIAL	56% Cotton, 24% Viscose, 20% Linen
WEIGHT	518 g/ lin.m
WIDTH	140 cm
MARTINDALE CYCLES	32 000
PILLING RESISTANCE	3-4
COLOR FASTNESS TO LIGHT	4
COLOR FASTNESS TO RUBBING	Dry: 4-5, Wet: 4-5
FLAME RETARDANCY	BS 5852 PART 1 CIGARETTE TEST



01



02



03



08



11



12



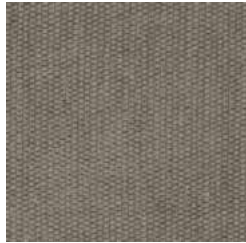
17



18



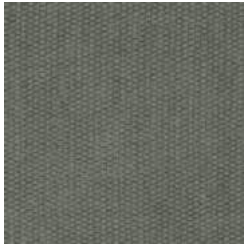
25



28



29



30



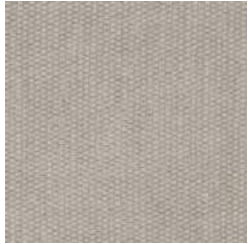
31



32



33



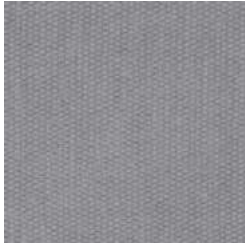
36



40



50



51



52



53



54



55



56



57



58



59



62



63



65



67



68



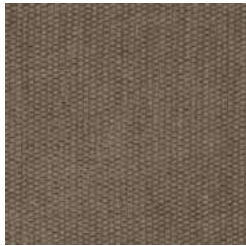
69



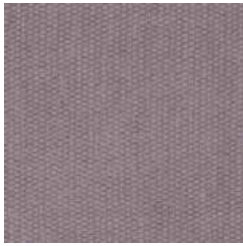
70



71



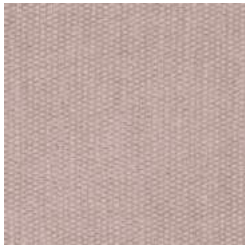
72



73



74



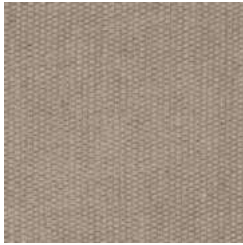
76



78



79



80



81



82



83



85

Approved for: Gropius collection

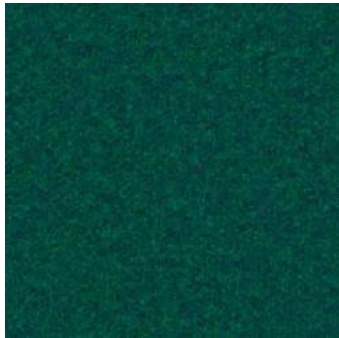


Description

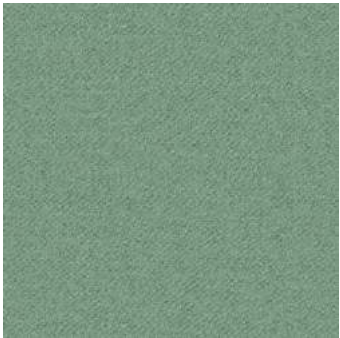
Epitomising natural simplicity, Synergy is a wool rich fabric which is at once both irresistibly soft and ultra-high performing. Delicately felted, with a beautifully relaxed drape, the understated aesthetics showcase the intriguing colouration of this considered textile. Featuring exquisite fibre dyed shades and sumptuous piece dyed solids within its palette of 75 colourways, there truly is a tone for every scheme.

Technical data

MATERIAL	95% Virgin Wool, 5% Polyamide	
WEIGHT	400 gr/m2	
WIDTH	140 cm	
MARTINDALE CYCLES	100 000	
PILLING RESISTANCE	4-5	
COLOR FASTNESS TO RUBBING	Dry: 4, Wet: 4	
COLOR FASTNESS TO LIGHT	5	
FLAME RETARDANCY	EN 1021 - 1&2 (cigarette & match) BS 7176 Low Hazard NF D 60-013 UNI 9175 Classe 1 IM EN 13501-1 Adhered Class D, s1, d0 IMO FTP Code (Part 8)	The Furniture and Furnishing (Fire Safety) Regulations 1988 (UK domestic cigarette and match) BS 5852 Ignition Source 5 when FR treated BS 7176 Medium Hazard when FR treated EN 13501-1 Adhered Class B, s1, d0 when FR treated EN 13501-1 Un-adhered Class D, s2, d0 when FR treated BS 5867-2: Type B Curtains & Drapes when FR treated



LDS50 League



LDS54 Regard



LDS51 Kindness



LDS56 Kinship



LDS53 Pact



LDS52 Comply



LDS49 Append



LDS55 Support



LDS41 Couple



LDS66 Fellowship



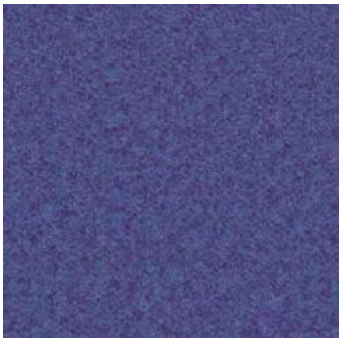
LDS63 Guild



LDS05 Venture



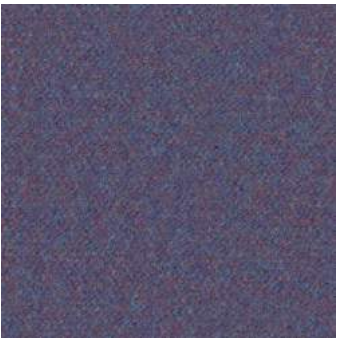
LDS60 Accord



LDS68 Collaborate



LDS61 Assemble



LDS64 Order



LDS59 Group



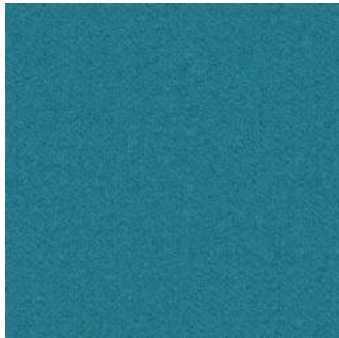
LDS67 Warmth



LDS65 Huddle



LDS58 Family



LDS57 Engage



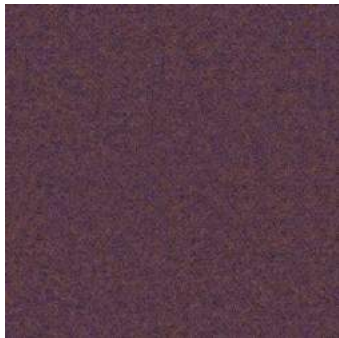
LDS62 Alike



LDS47 Integrate



LDS46 Gather



LDS70 Together



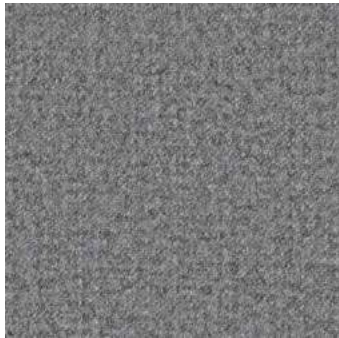
LDS07 Fate



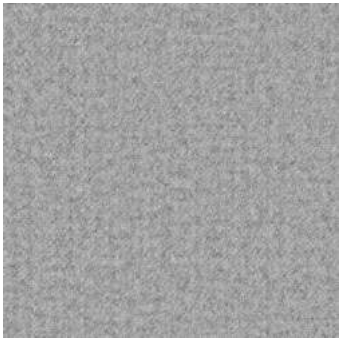
LDS35 Chemistry



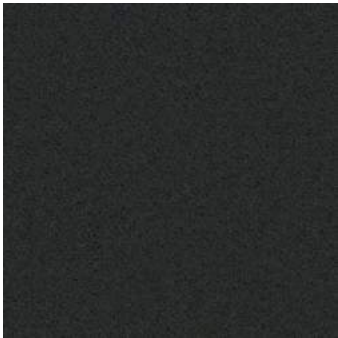
LDS38 Unity



LDS16 Partner



LDS08 Serendipity



LDS25 Compound



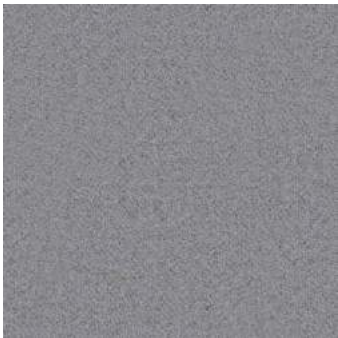
LDS33 Tag



LDS24 Bond



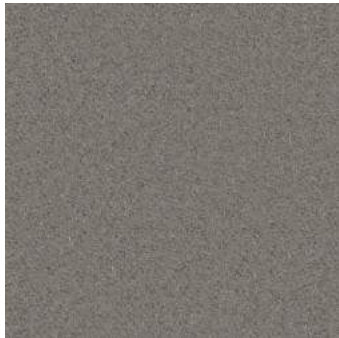
LDS32 Affix



LDS21 Team



LDS29 Hook



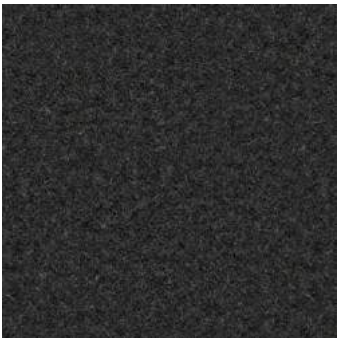
LDS31 Pair



LDS19 Chain



LDS20 Level



LDS17 Mix



LDS23 Bracket



LDS28 Lateral



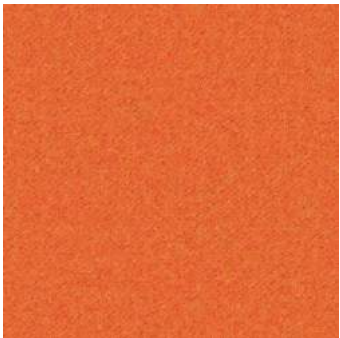
LDS44 Relate



LDS45 Summon



LDS83 Congregate



LDS82 likeness



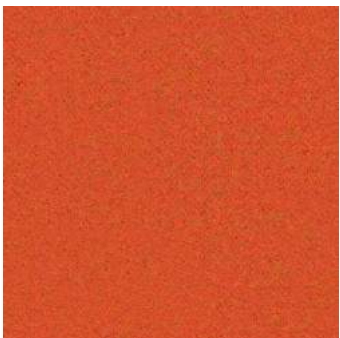
LDS87 Values



LDS80 Apt



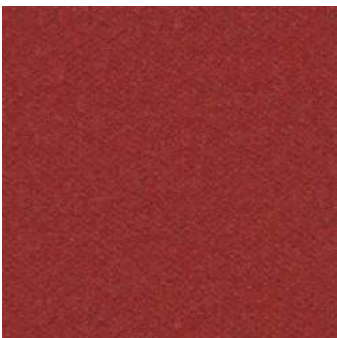
LDS86 Global



LDS81 Similar



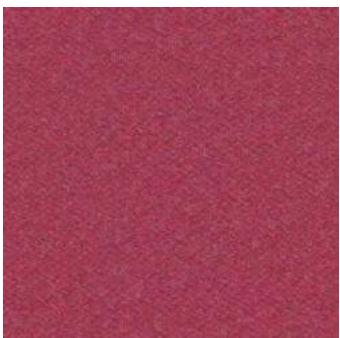
LDS71 Open



LDS85 Share



LDS84 Mutual



LDS36 Medley



LDS74 Affinity



LDS72 Compose



LDS39 Collective



LDS48 Interfuse



LDS75 Contribution



LDS37 Linea



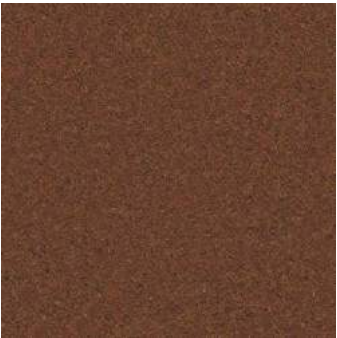
LDS73 Work



LDS18 Loop



LDS34 Wed



LDS78 Cordinal



LDS77 Combo



LDS22 Frame



LDS43 Marry



LDS76 Success



LDS79 Amiable



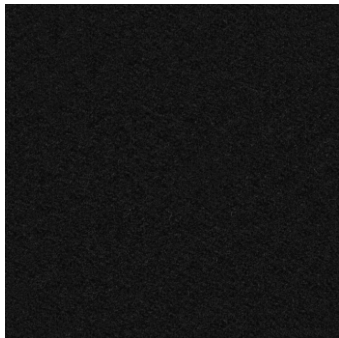
LDS69 Sync



LDS40 Co-operate



LDS88 Process



LDS27 Seek



LDS42 Inrewine



LDS26 Bridge

Approved for: Gropius collection



Description

ARCO is a timeless and elegant rohi classic. Its delightful, finest new wool texture is particularly soft, yet robust and durable. With its high-volume structure, ARCO gives furniture a special aesthetic quality and makes it universally usable. With a comprehensive overhaul of the colour range, launching 44 new colours, rohi has underlined the versatility of this successful classic.

Technical data

MATERIAL	Virgin Wool 95%, Polyamide 5%	
WEIGHT	980 g/lm	
WIDTH	140 cm	
MARTINDALE CYCLES	70 000	
PILLING RESISTANCE	4-5	
COLOR FASTNESS TO LIGHT	5	
FLAME RETARDANCY	CAL TB 117 - 2013	with additional flame retardant finish:
	DIN EN 1021-1/ -2	BS 5852: 2006 Crib5
	BS 5852 part 1: 1979	DIN 4102-1 B2
	UNI 9175 1 IM	DIN EN 13501-1 E
	IMO 2014/90/EU	FAR 25.853 12 sec. vertical
FABRIC FEATURES	Special finish: anti-shrink, anti-pilling, anti-static.	
	Stain-resistant, Breathable.	
	Special colours from 25 lm.	



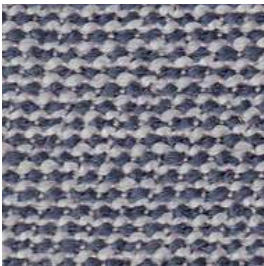
calla



arctic



ice



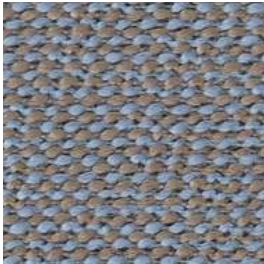
pebble



snow



nube



coast



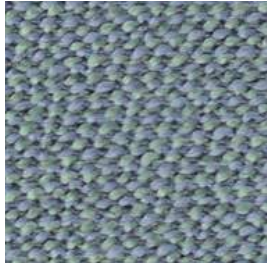
jasmin



truffle



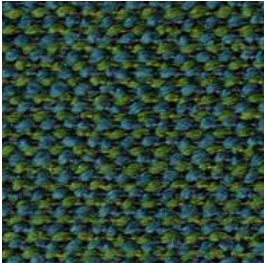
secret



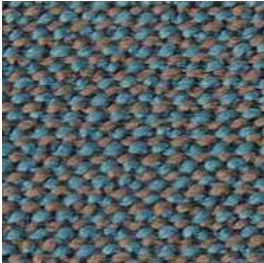
aqua



coffee



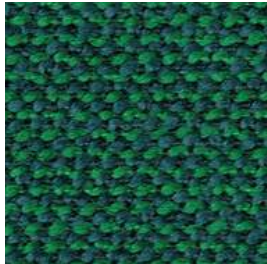
forest



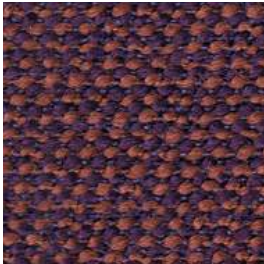
pond



espresso



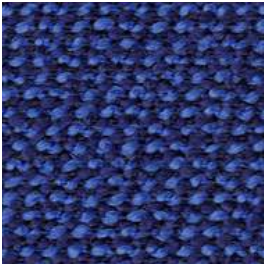
garden



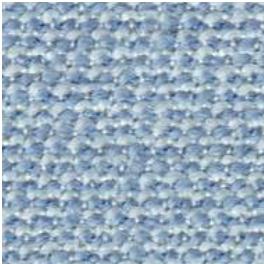
magma



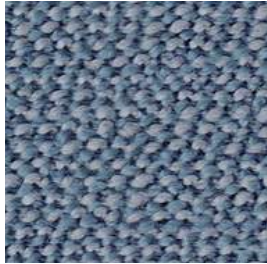
ink



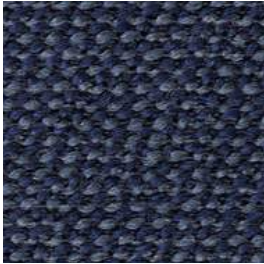
cobalt



breeze



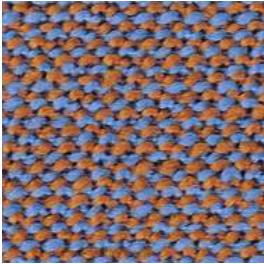
azur



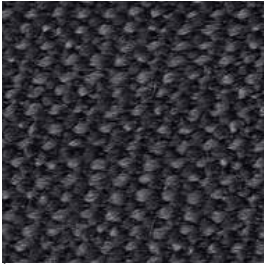
mountain



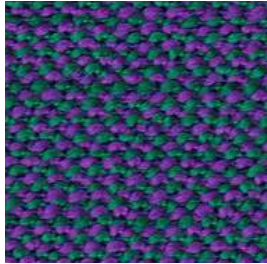
mare



vivid



lanoso



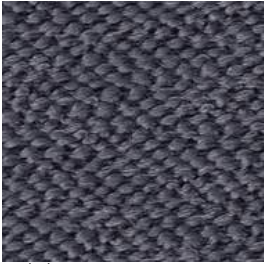
circus



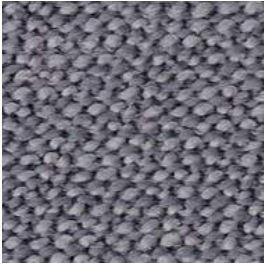
ebony



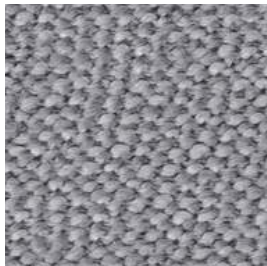
carbon



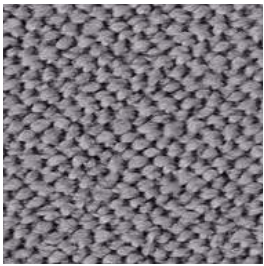
asphalt



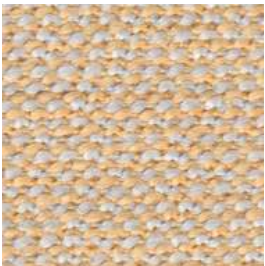
kies



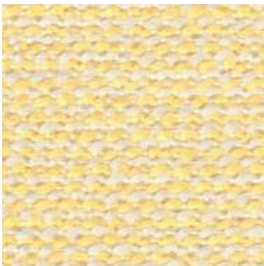
fels



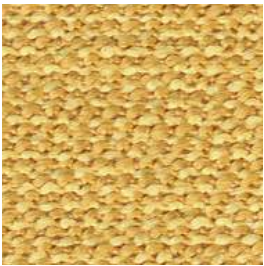
gravel



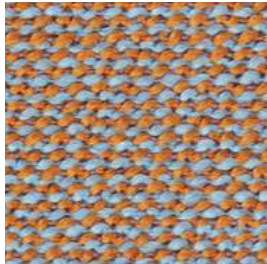
birch



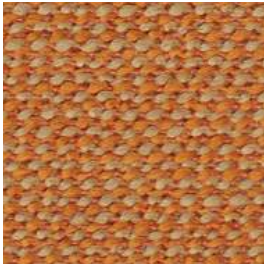
citron



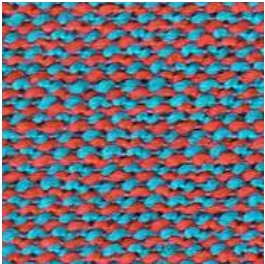
corn



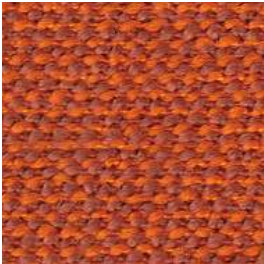
jade



safran



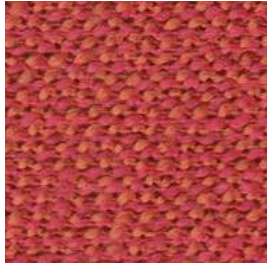
samba



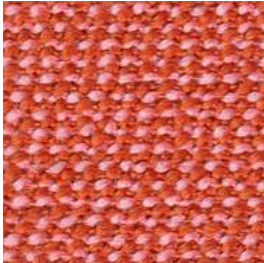
sunset



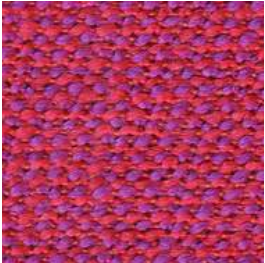
cherry



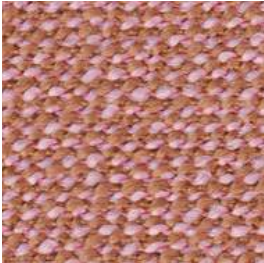
fire



guave



magenta



blossom

Approved for: Gropius collection



Description

The grainy feel and organic look of the Sera fabric are perfect “translation” of the tactile values of nature. In two or three colours, SERA shows both subtle and intense hues, with a high volume structure, while the special woven binding lends it an air of sophistication

Technical data

MATERIAL	Virgin Wool 94%, Polyamide 6%	
WEIGHT	910 g/lm	
WIDTH	140 cm	
MARTINDALE CYCLES	122 000	
PILLING RESISTANCE	4-5	
COLOR FASTNESS TO LIGHT	5	
FLAME RETARDANCY	CAL TB 117 - 2013	with additional flame retardant finish:
	DIN EN 1021-1/ -2	BS 5852: 2006 Crib5
	BS 5852 part 1: 1979	DIN 4102-1 B2
	UNI 9175 1 IM	DIN EN 13501-1 E
	IMO 2014/90/EU	FAR 25.853 12 sec. vertical
FABRIC FEATURES	Special finish: anti-shrink, anti-pilling, anti-static.	
	Stain-resistant, Breathable.	
	Special colours from 25 lm.	



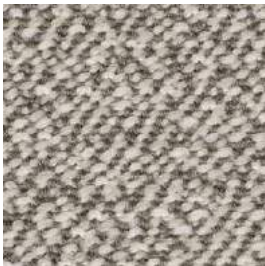
snow



calla



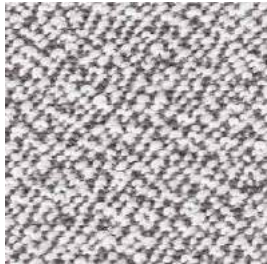
flanell



stone



almond



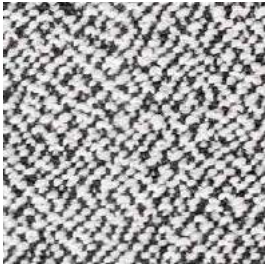
porcelain



mirror



taupe



pepper



fango



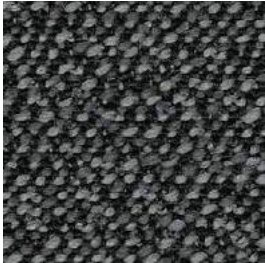
walnut



carbon



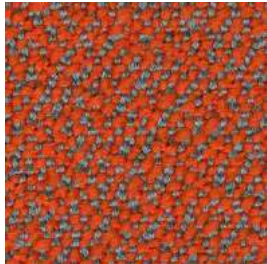
ebony



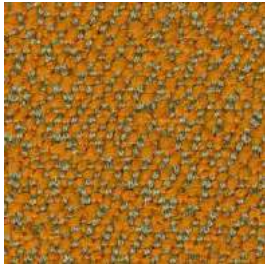
graphit



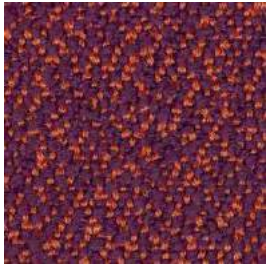
gravel



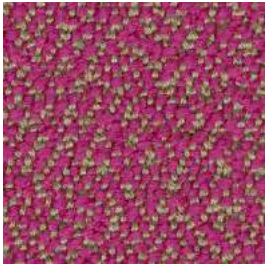
glow



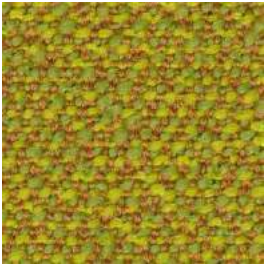
chutney



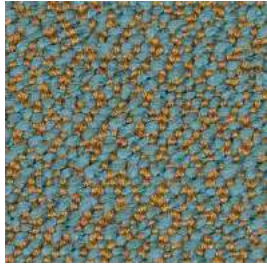
berry



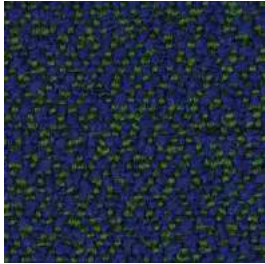
lotus



tivoli



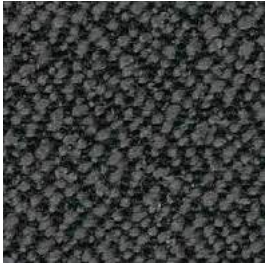
mirage



mare



torba



anthrazit



amur



rosewood

Approved for: Gropius collection



Description

Steelcut Trio is a hardwearing woollen upholstery textile with the same construction as Steelcut. Originally designed by Frans Dijkmeijer, it comes in updated colourways crafted by Giulio Ridolfo. The three-dimensional surface of Steelcut Trio resembles small pyramids or steel points. Despite the complexity of the textile’s innovative weave, it has a simple, precise expression. Steelcut Trio is yarn-dyed and made from 3 differently coloured yarns.

Technical data

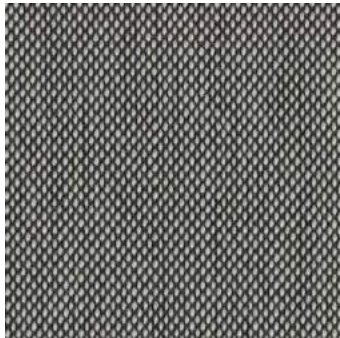
MATERIAL	90% New wool, 10% Nylon	
WEIGHT	770 g/lin. m	
WIDTH	140 cm	
PILLING RESISTANCE	4	
COLOR FASTNESS TO LIGHT	5-7	
COLOR FASTNESS TO RUBBING	Dry: 4-5, Wet: 3-5	
FLAME RETARDANCY	AS/NZS 1530.3	GB 50222 B1 with treatment (Chinese)
	AS/NZS 3837 class 2	IMO FTP Code 2010 Part 8
	ASTM E84 Class A Unadhered	NF D 60 013
	ASTM E84 Class B Adhered	NFPA 260
	BS 5852 crib 5 with treatment	ÖNORM B1/Q1
	BS 5852 ignition source 3	SN 198 898 5.3 with treatment
	BS 5852 part 1	UNI 9175 11MUS Cal. Bull. 117-2013
	EN 1021-1/2	US Cal. Bull. 117-2013



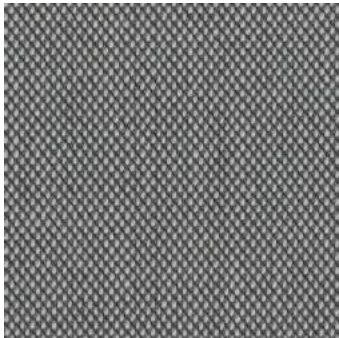
0105



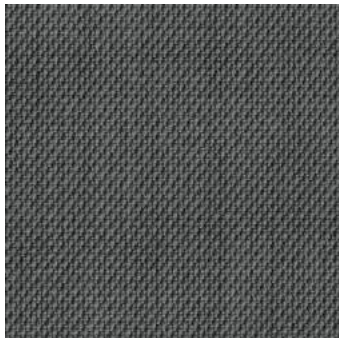
0113



0124



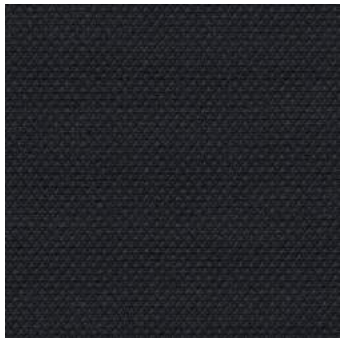
0133



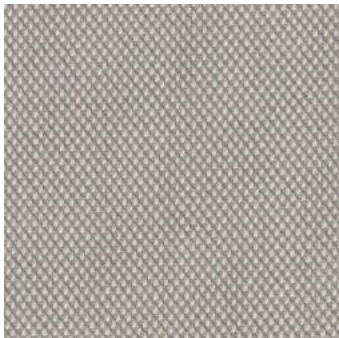
0153



0176



0195



0205



0213



0226



0236



0246



0253



0266



0276



0283



0336



0376



0383



0416



0426



0436



0446



0453



0466



0476



0506



0515



0526



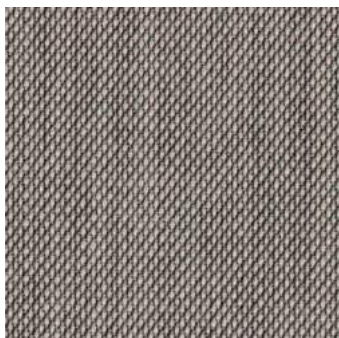
0533



0553



0576



0616



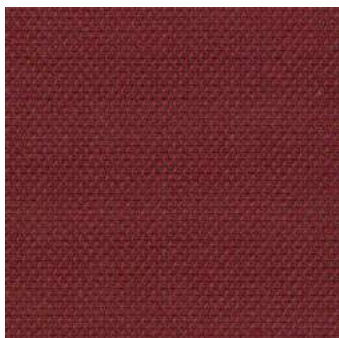
0636



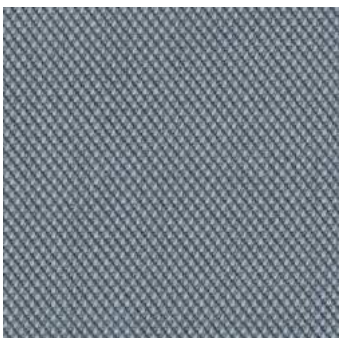
0645



0666



0686



0713



0716



0746



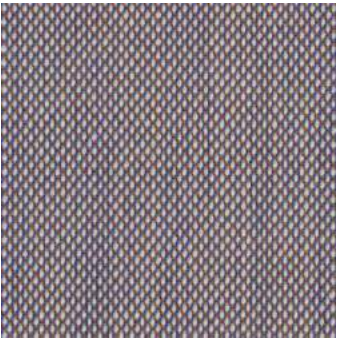
0756



0776



0796



0806



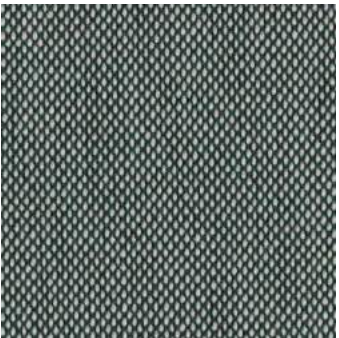
0865



0883



0906



0916



0946



0953



0966



0976



0983



0996

Approved for: Gropius collection



Description

Unicoloured Steelcut 3 is an evolution of the archetypal woollen upholstery textile Steelcut, which comes in bright, confident hues by colour master Giulio Ridolfo. It is characterised by exceptional durability, tactility, and colour depth.

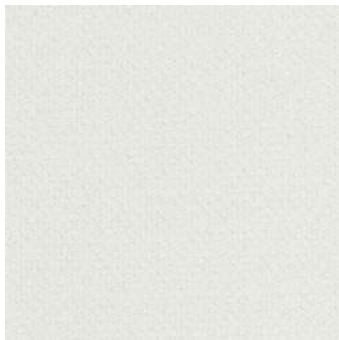
Steelcut 3 features an innovative, intricate construction by Frans Dijkmeijer which offers a three-dimensional surface resembling small pyramids or steel points.

Technical data

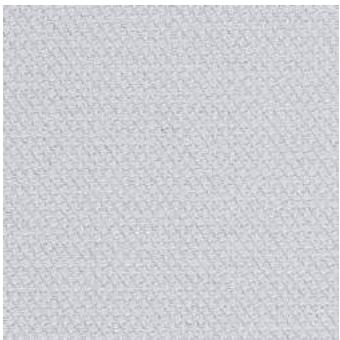
MATERIAL	90% New wool, 10% Nylon		
WEIGHT	825 g/lin. m		
WIDTH	140 cm		
MARTINDALE CYCLES	100 000		
PILLING RESISTANCE	5-7		
COLOR FASTNESS TO RUBBING	Dry: 4-5, Wet: 3-5		
COLOR FASTNESS TO LIGHT	AS/NZS 1530.3		
FLAME RETARDANCY	AS/NZS 3837 class 2	ÖNORM B1/Q1	
	ASTM E84 Class A Unadhered	SN 198 898 5.3 with treatment	
	ASTM E84 Class B Adhered	UNI 9175 1IM	
	BS 5852 crib 5 with treatment	US Cal. Bull. 117-2013	
	BS 5852 part 1		
	EN 1021-1/2		
	IMO FTP Code 2010 Part 8		
	NF D 60 013		
	NFPA 260		

The colours in this publication may differ from the original product.





0110



0120



0140



0155



0160



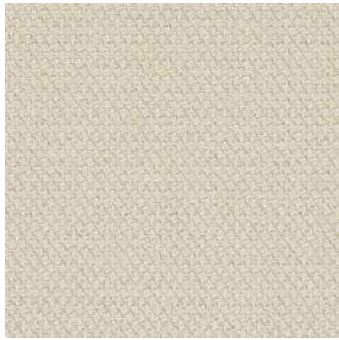
0180



0190



0220



0240



0252



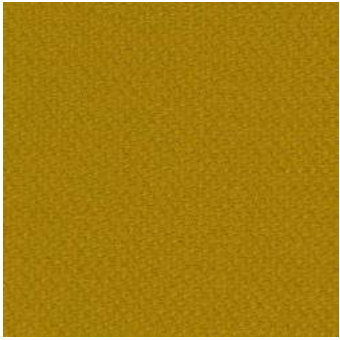
0265



0365



0402



0445



0452



0502



0512



0522



0535



0545



0552



0562



0605



0612



0652



0655



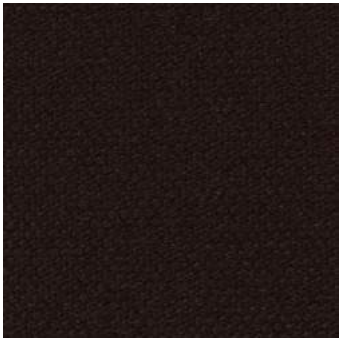
0662



0672



0682



0695



0732



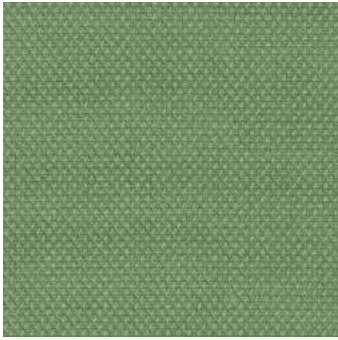
0742



0775



0780



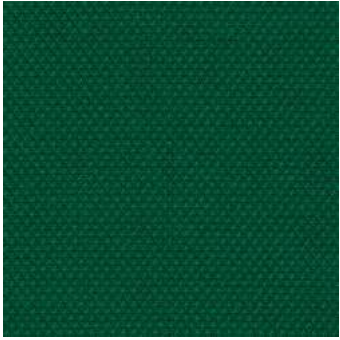
0912



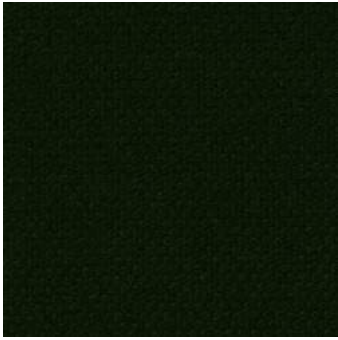
0922



0932



0962



0975



0985

Approved for: Gropius & Flock collections



Description

Collection Carnival is designed by heritage Italian fabric mill One Mario Sirtori. Created both for the residential and contract sectors, Carnival combines aesthetics, innovative design, and high performance. A yarn-dyed fabric has an uneven structure that gives it charm and character. Carnival comes in a range of 8 mixed color patterns and delivers a rich softness and beauty to any furniture.

Technical data

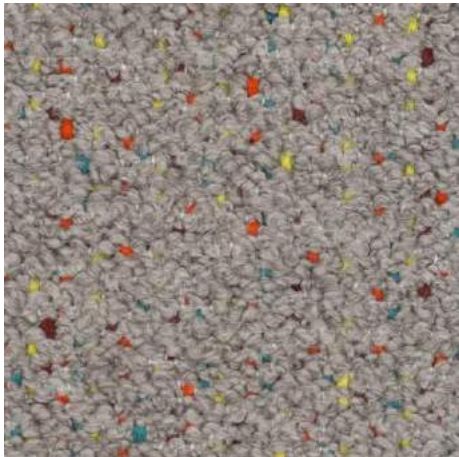
MATERIAL	40% Cotton, 22% Acrylic, 16% Viscose, 11% Wool, 11% Polyester
WEIGHT	930 g/m2
WIDTH	140 cm
MARTINDALE CYCLES	100 000
PILLING RESISTANCE	4-5
COLOR FASTNESS TO RUBBING	Dry: 5, Wet: 4
COLOR FASTNESS TO LIGHT	5
FLAME RETARDANCY	California TB 117:2013 EN 1021-1&2 BS 5852-Part 0-1 (C&M)



01



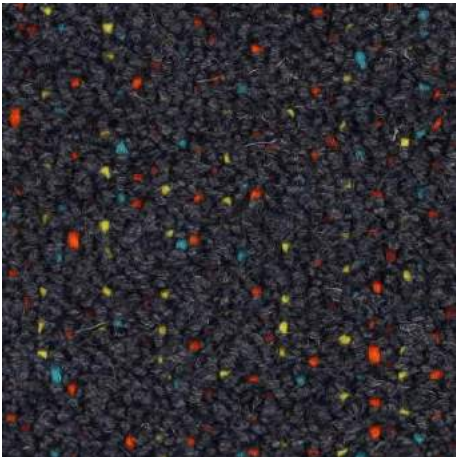
01/1



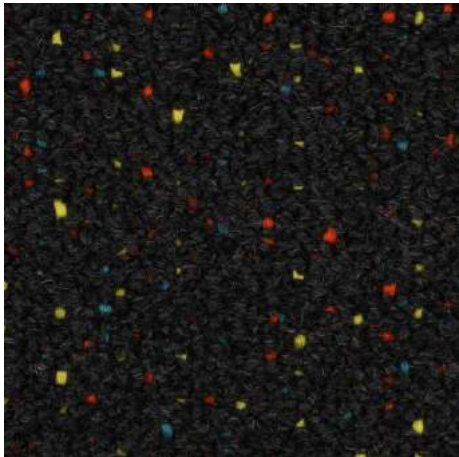
01/3



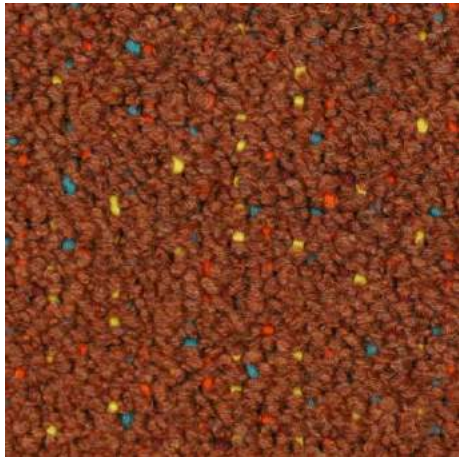
01/6



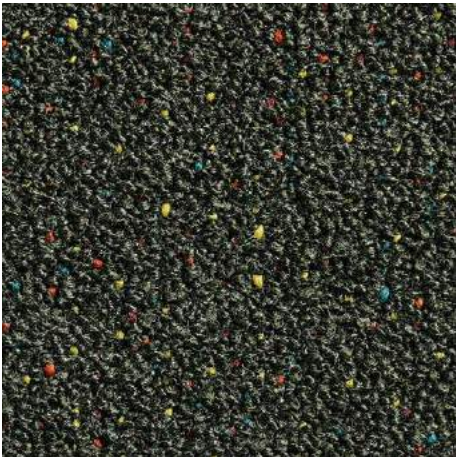
100/9



100/11



100/12



100/17

Approved for: Gropius & Flock collections



Description

Bouclé fabric inspired by the precious astrakhan furs, Barnum is the wool bouclé whose aesthetic characteristics are softness to the touch and a precious three-dimensionality accentuated by a very light mélange effect that gives depth to the colour.

Technical data

MATERIAL	45% Cotton, 19% Viscose, 15% Wool, 13% Polyacrylic, 8% Polyamide
WEIGHT	143 cm +/- 3%
WIDTH	950 g/ml +/- 8%
MARTINDALE CYCLES	60 000
PILLING RESISTANCE	4
COLOR FASTNESS TO RUBBING	Dry: 4-5, Wet: 3-4
COLOR FASTNESS TO LIGHT	5
FLAME RETARDANCY	BS 5852-1 Source 0 & 1 CALIFORNIA BULLETIN TB 117:2013



Col. 14



Col. 21



Col. 24



Col. 1



Col. 18



Col. 10



Col. 11



Col. 7



Col. 9



Col. 5



Col. 15



Col. 19



Col. 23



Col. 2



Col. 4



Col. 12



Col. 17



Col. 22



Col. 20



Col. 13

Approved for: Gropius & Flock collections



Description

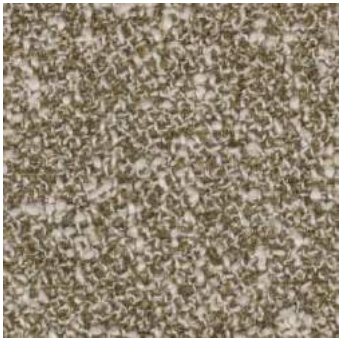
The influence of Parisian couture clothing can be seen in this elegant and irregular bouclé upholstery textile. The pearl effect yarn is used in both warp and weft giving a luxurious handle and a sophisticated appearance. The 16 colourways range from tonal through to contrasting ‘salt and pepper’ combinations.

Technical data

MATERIAL	65% Cotton, 20% Polyacrylic, 15% Polyester
WEIGHT	740 g/lin.m
WIDTH	140 cm
MARTINDALE CYCLES	70 000
PILLING RESISTANCE	5
COLOR FASTNESS TO LIGHT	5-6
COLOR FASTNESS TO RUBBING	Dry: 4-5, Wet: 4
FLAME RETARDANCY	BS 5852 crib 5 with treatment EN 1021 - 1 US Cal. 117-2013 with Cal. 117 compliant interliner BS 5852 part 1 with treatment



0001



0002



0003



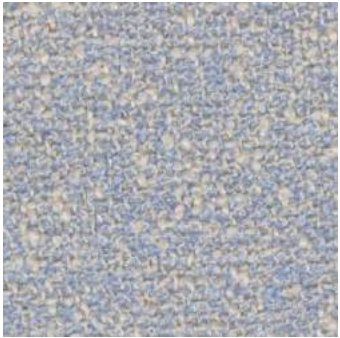
0004



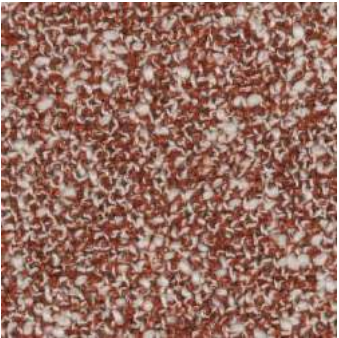
0005



0006



0007



0008



0009



0010



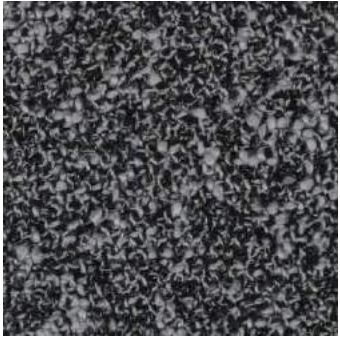
0011



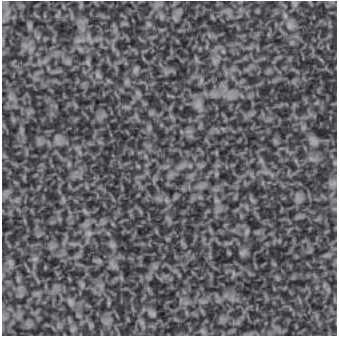
0012



0013



0014



0015



0016

Approved for: Gropius collection



Description

Divina MD is an upholstery textile designed by Finn Sködt. Available in sophisticated, rich colours, which reveal hidden depths as the perspective of the viewer changes, it makes a strong colour statement. In addition, thanks to its smooth, directionless and consistent surface, it complements the shape of furniture very well and is ideal for organically shaped furniture.

Technical data

MATERIAL	100% New wool	
WEIGHT	840 g/lin.m	
WIDTH	150 cm	
MARTINDALE CYCLES	45 000	
PILLING RESISTANCE	3	
COLOR FASTNESS TO LIGHT	5-7	
FLAME RETARDANCY	S/NZS 1530.3	IMO FTP Code 2010 Part 8
	ASTM E84 Class A Adhered	NF D 60 013
	ASTM E84 Class B Unadhered	NFPA 260
	BS 5852 Crib 5	NFPA 701 with treatment
	BS 5852 part 1	ÖNORM B1/Q1
	BS 5867 part 2 type B	SN 198 898 5.3 with treatment
	EN 1021-1/2	UNI 9175 11M
	EN 13501, C-s1, d0, glued	US Cal. Bull. 117-2013
	GB 50222 B1 with treatment (Chinese)	



0193



0203



0213



0293



0343



0353



0363



0413



0433



0453



0613



0633



0653



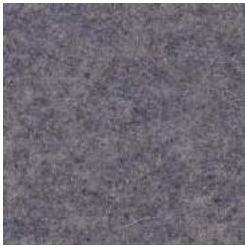
0673



0683



0713



0733



0743



0753



0773



0783



0813



0843



0873



0913



0943



0973

Approved for: Gropius collection



Description

Divina Melange 3 is a vibrant piece-dyed woollen upholstery textile reminiscent of felt. Cheerfully simple, it comes in a fresh, versatile palette by artist and designer Finn Sködt.
Compact, comfortable and extremely smooth, Divina Melange 3 expresses colours and the shape of furniture particularly well.
The new colour scale combines signature nuances, such as hot pink, forest green and Finn Sködt’s favourite ultramarine, together with chalky notes and neutral shades.

Technical data

MATERIAL	100% new wool		
WEIGHT	820 g/lin.m		
WIDTH	150 cm		
MARTINDALE CYCLES	45 000		
PILLING RESISTANCE	3		
COLOR FASTNESS TO RUBBING	Dry: 4-5, Wet: 3-5		
COLOR FASTNESS TO LIGHT	5-7		
FLAME RETARDANCY	AS/NZS 1530.3	Chinese GB 50222B1 with treatment	NFPA 701 with treatment
	ASTM E84 Class A Adhered	EN 1021-1/2	ÖNORM B1/Q1
	ASTM E84 Class B Unadhered	EN 13501, C-s1, d0, glued	SN 198 898 5.3 with treatment
	BS 5852 Crib 5	IMO FTP Code 2010 Part 8	UNI 9175 11M
	BS 5852 part 1	NF D 60 013	US Cal. Bull. 117-2013
	BS 5867 part 2 type B	NFPA 260	



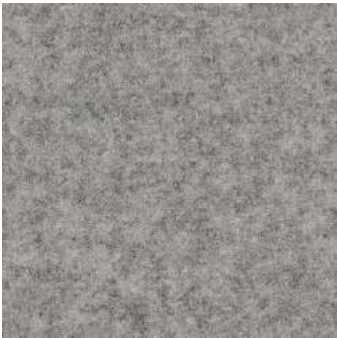
0937



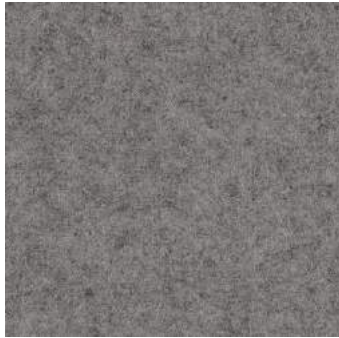
0967



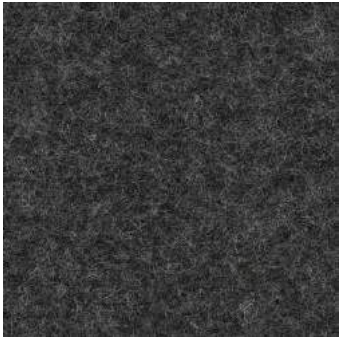
0977



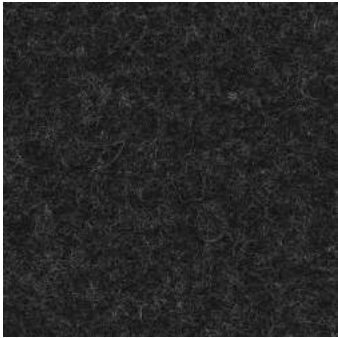
0120



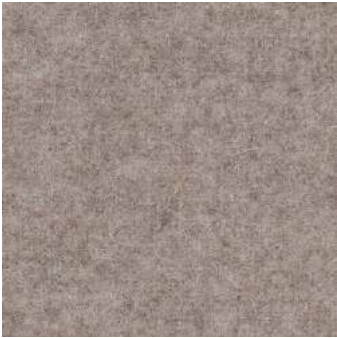
0147



0170



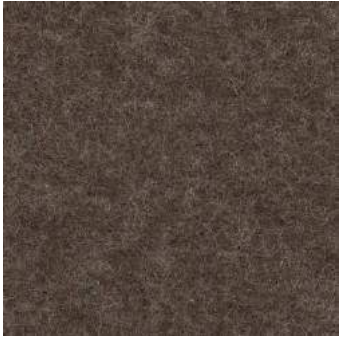
0180



0227



0237



0260



0277



0280



0367



0427



0457



0467



0471



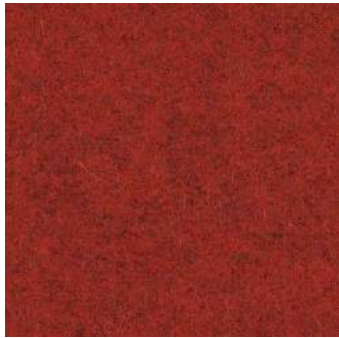
0517



0527



0547



0557



0567



0571



0581



0597



0617



0620



0647



0677



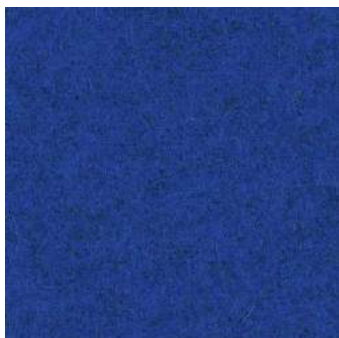
0687



0731



0747



0757



0777



0787



0821

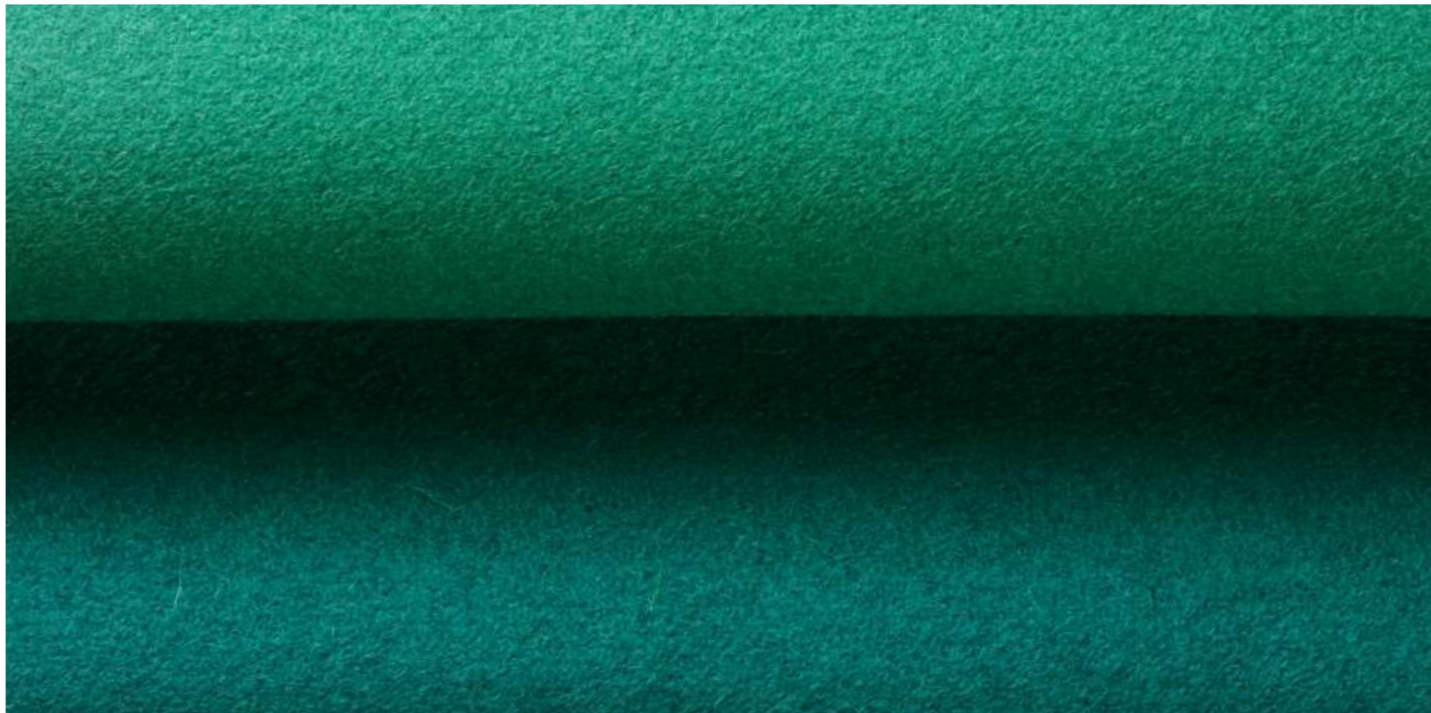


0871



0917

Approved for: Gropius collection



Description

Divina is a full-cloth product, which means that it is manufactured by weaving the yarn in a coarse linen hose casing, after which, it is subjected to mechanical processing using very high temperatures, at the same time as it is being coloured. This creates a situation where the surface becomes smooth, directionless and uniform in a manner very similar to the properties of felt.

Technical data

MATERIAL	100% New wool	
WEIGHT	840 g/lin.m	
WIDTH	150 cm	
MARTINDALE CYCLES	45 000	
PILLING RESISTANCE	Note 3	
COLOR FASTNESS TO RUBBING	Dry: 4-5, Wet: 3-5	
COLOR FASTNESS TO LIGHT	5-7	
FLAME RETARDANT	AS/NZS 1530.3	IMO FTP Code 2010 Part 8
	ASTM E84 Class A Adhered	NF D 60 013
	ASTM E84 Class B Unadhered	NFPA 260
	BS 5852 Crib 5	NFPA 701 with treatment
	BS 5852 part 1	ÖNORM B1/Q1
	BS 5867 part 2 type B	SN 198 898 5.3 with treatment
	EN 1021-1/2	UNI 9175 1IM
	EN 13501, C-s1, d0, glued	US Cal. Bull. 117-2013
	GB 50222 B1 with treatment (Chinese)	

				
0106	0154	0171	0173	0181
				
0191	0224	0236	0246	0334
				
0346	0356	0376	0384	0393
				
0426	0444	0462	0526	0536
				
0542	0552	0562	0584	0623
				
0626	0636	0652	0662	0666
				
0671	0676	0684	0686	0691



0692



0696



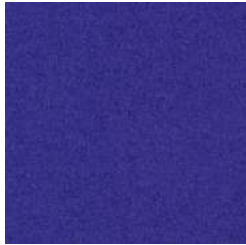
0712



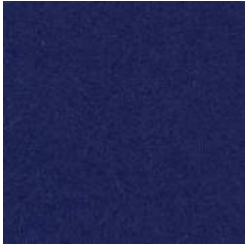
0742



0756



0782



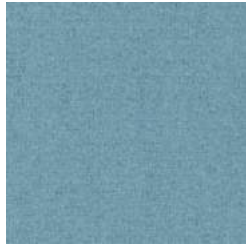
0791



0793



0826



0836



0846



0856



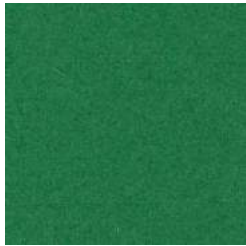
0876



0886



0893



0922



0936



0944



0956

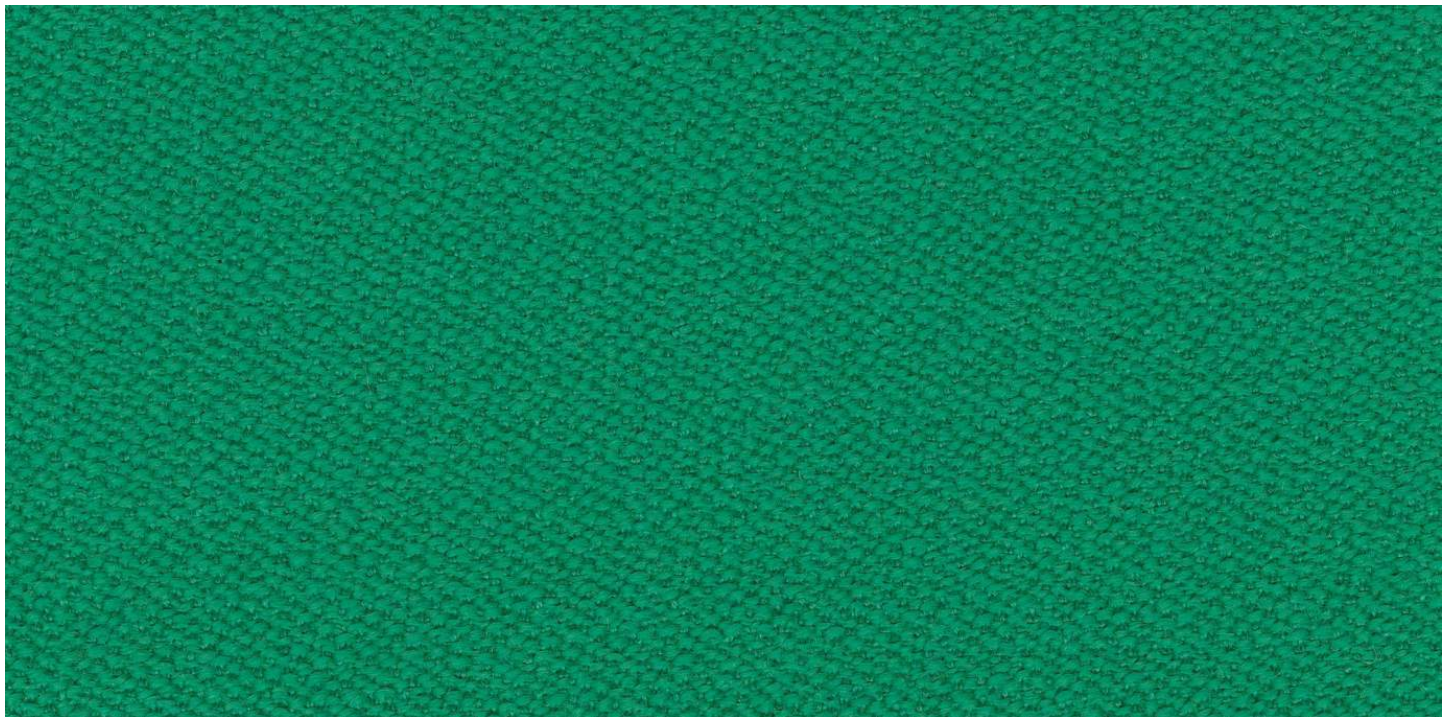


0966



0984

Approved for: Gropius & Flock collections



Description

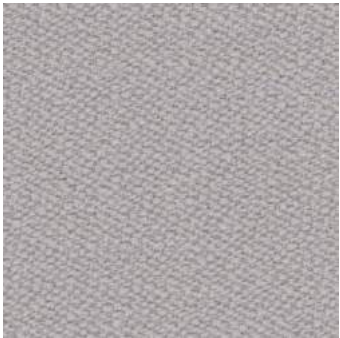
Originally designed by Fanny Aronsen, Vidar has been re-coloured by Raf Simons, with shades ranging from moss green, dark aubergine, ruby red and midnight blue through to brick and earth tones, and easy neutrals. The gentle satin surface finish of the weave contrasts with the deep shadowy tones in the depths, giving a multifaceted richness to the intense colours in the range.

Technical data

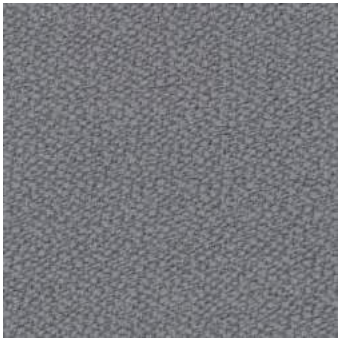
MATERIAL	94% New wool, 6% Nylon	
WEIGHT	770 g/ lin.m	
WIDTH	140 cm	
MARTINDALE CYCLES	100 000	
PILLING RESISTANCE	4	
COLOR FASTNESS TO RUBBING	Dry: 3-5, Wet: 3-5	
COLOR FASTNESS TO LIGHT	5-7	
FLAME RETARDANCY	AS/NZS 3837 class 2 EN 1021 - 1/2	NF D 60 013
	BS 5852 crib 5 with treatment	NFPA 260NFPA 260
	BS 5852 part 1	SN 198 898 5.3 with treatment
	EN 1021-1/2	UNI 9175 1IM
	GB 50222 B1 with treatment (Chinese)	US Cal. Bull. 117-2013
	IMO FTP Code 2010 Part 7 with treatment	
	IMO FTP Code 2010 Part 8	



0106



0123



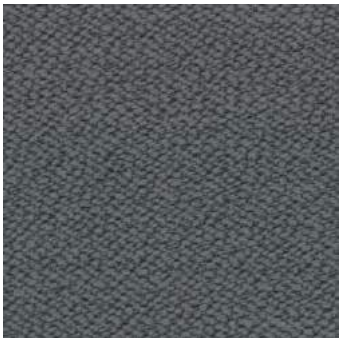
0133



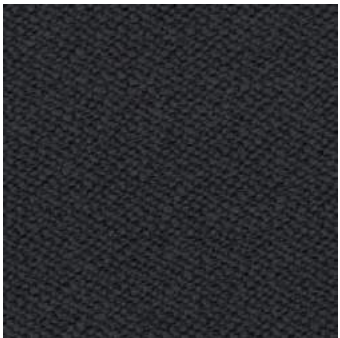
0143



0146



0152



0182



0222



0323



0333



0353



0363



0386



0443



0456



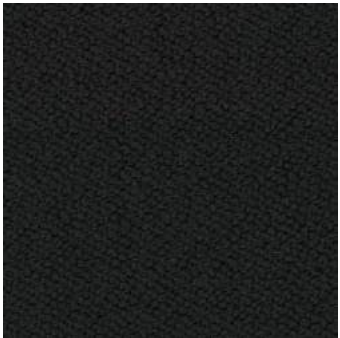
0472



0526



0542



1880



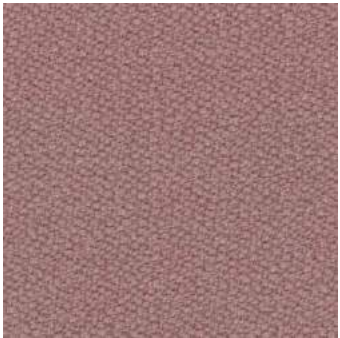
0556



0582



0622



0633



0653



0656



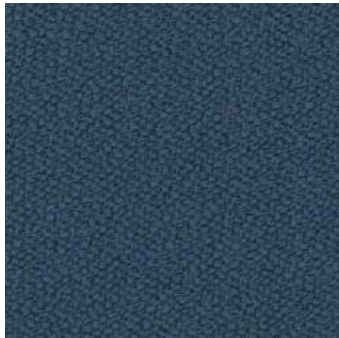
0676



0693



0723



0733



0743



0772



0786



0872



0913



0932



0943



0956



0972



1062



1511

Approved for: Gropius & Flock collections



Description

Planum is a knitted upholstery textile with a refined woven expression and a smooth, soft surface. It comes in curiosity-inspiring colours crafted by Dutch Design Studio Raw Color.

Naturally for a knitted textile, Planum features excellent stretchability, making it ideal for upholstering organic forms while minimising the number of seams. Suitable for contract and private use, the textile combines well with the more voluminous, three-dimensional textiles in the Kvadrat Febrik collection.

Technical data

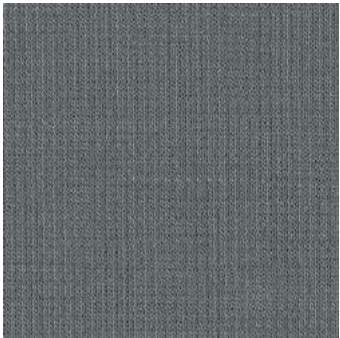
MATERIAL	44% New Wool, 42% Polyester, 14% Nylon
WEIGHT	700 g/lin. m
WIDTH	160 cm
MARTINDALE CYCLES	100 000
PILLING RESISTANCE	4
COLOR FASTNESS TO RUBBING	Dry: 4-5, Wet: 4-5
COLOR FASTNESS TO LIGHT	5-6
FLAME RETARDANCY	BS 5852 crib 5 with treatment IMO FTP Code 2010 Part 8 NFPA 260 UNI 9175 11M US Cal. Bull. 117-2013 DIN 4102 B2 EN 1021-1/2 ASTM E84 Class A Unadhered

The colours in this publication may differ from the original product.





0111



0141



0201



0241



0271



0351



0411



0441



0521



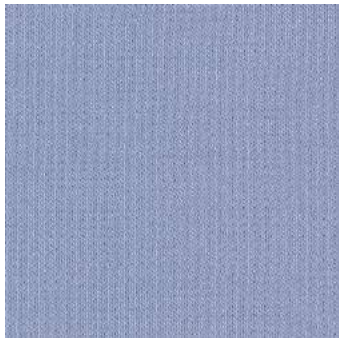
0551



0571



0681



0711



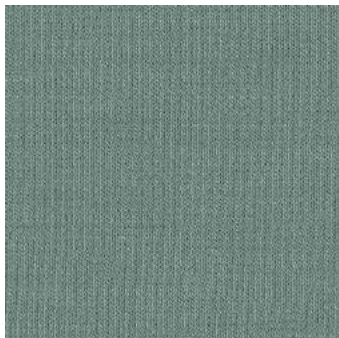
0741



0751



0791



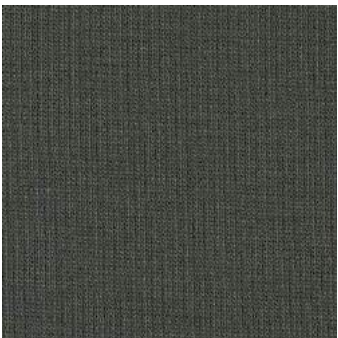
0921



0941

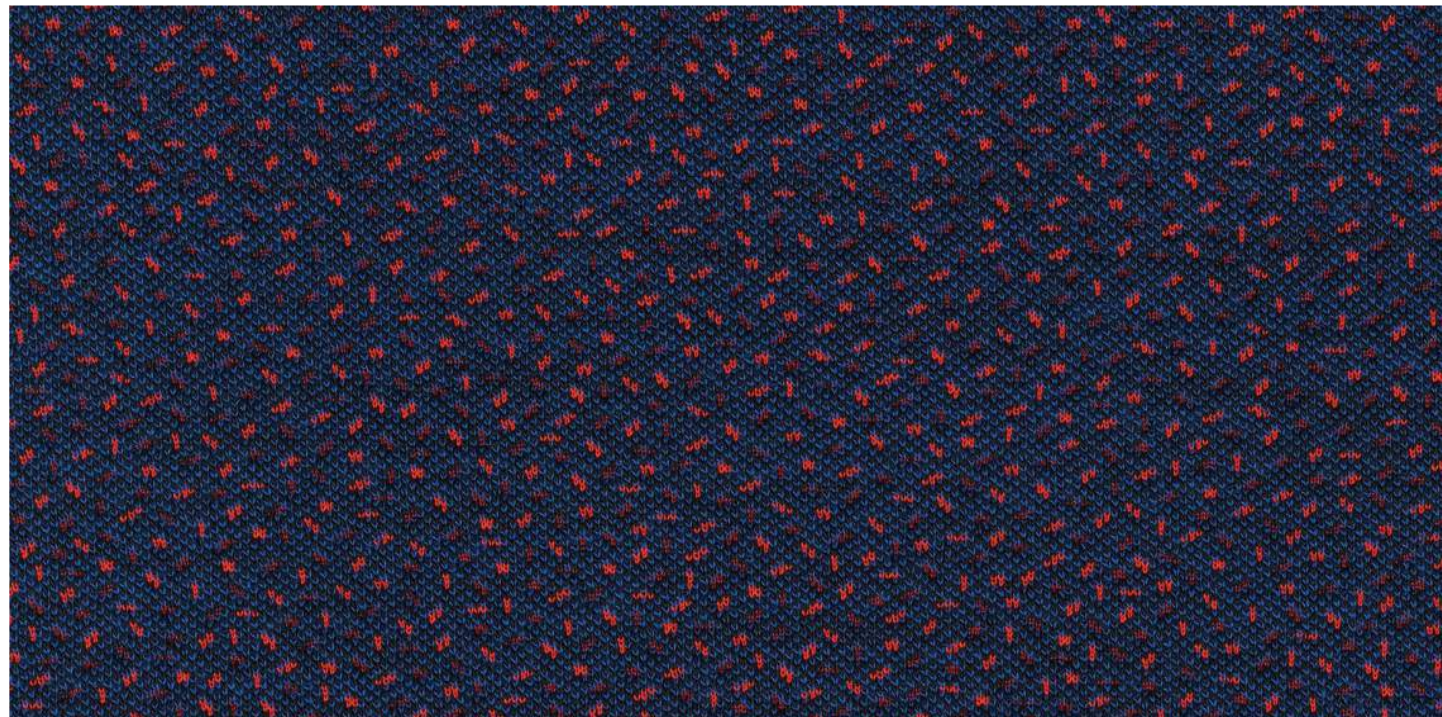


0961



0971

Approved for: Gropius & Flock collections

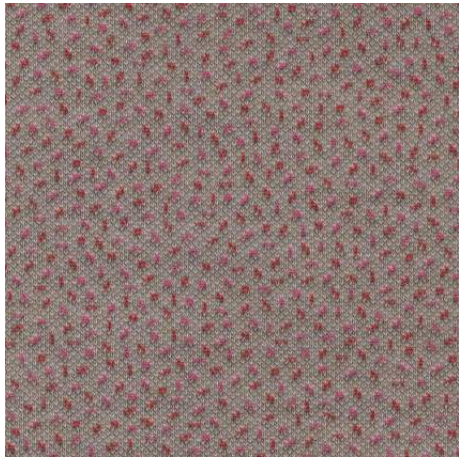


Description

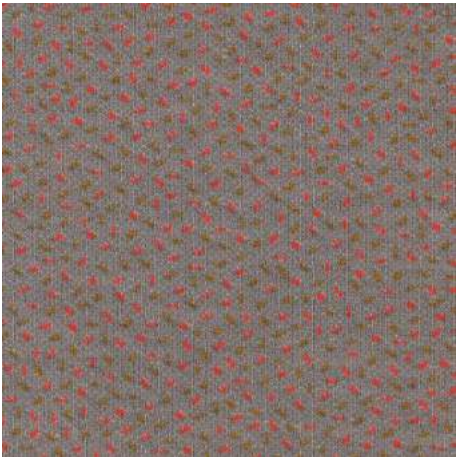
Sprinkles is a joyful knitted upholstery textile designed by Dutch designer Bertjan Pot. A close-up inspection of the knitted surface reveals a kaleidoscopic gathering of tiny coloured dots. Parallel to the thrill of a fun-fair, the dots alter in colour depending on the perspective of the spectator. Looked upon from a distance, the sparkling colours are subdued creating a subtle melange.

Technical data

MATERIAL	40% Polyester filling, 30% New Wool, 20% Polyester, 10% Nylon	
WEIGHT	1070 g/ lin.m	
WIDTH	160 cm	
MARTINDALE CYCLES	80 000	
PILLING RESISTANCE	4	
COLOR FASTNESS TO LIGHT	7	
FLAME RETARDANCY	BS 5852 crib 5 with treatment	ASTM E84 Class A Unadhered
	BS 5852 part 1	IMO FTP Code 2010 Part 8
	UNI 9175 1IM	IMO FTP Code 2010 Part 9
	US Cal. Bull. 117-2013	
	DIN 4102 B2	



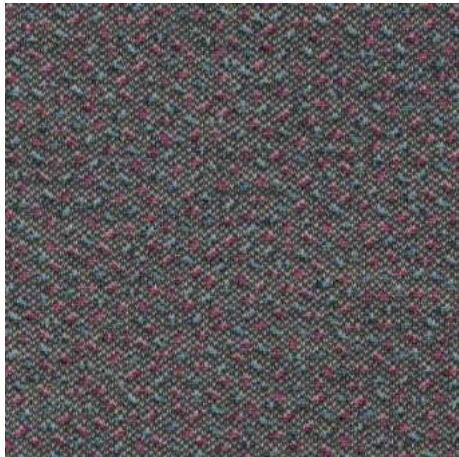
0114



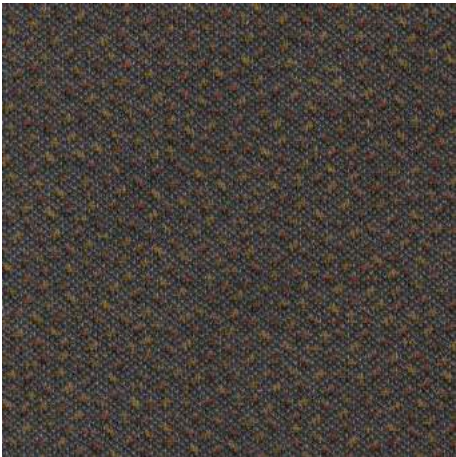
0124



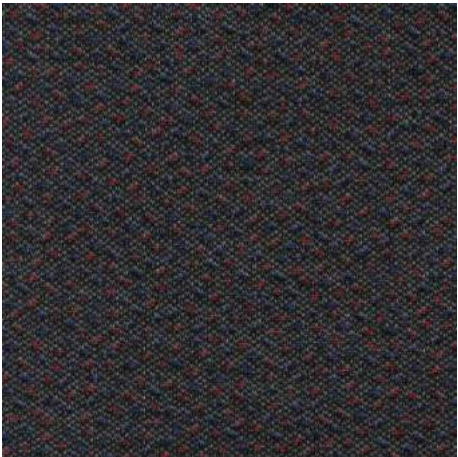
0134



0154



0174



0184



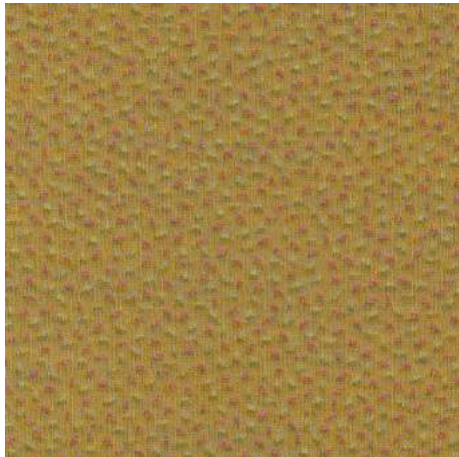
0254



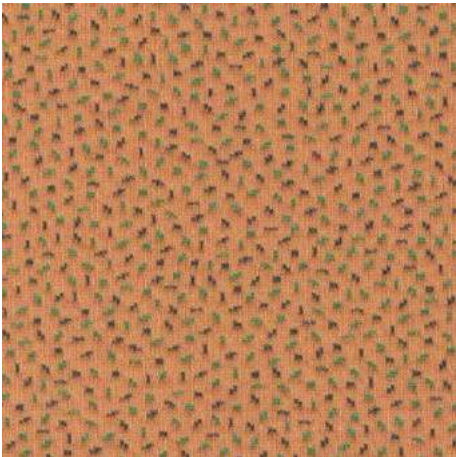
0274



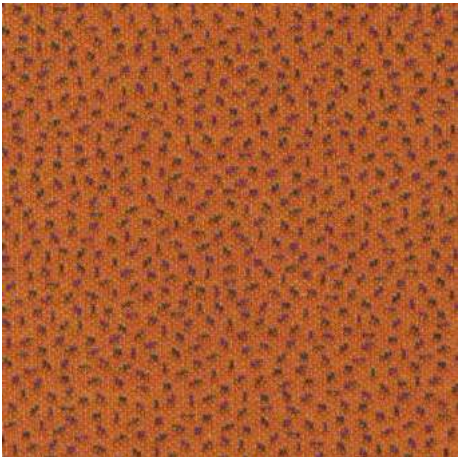
0294



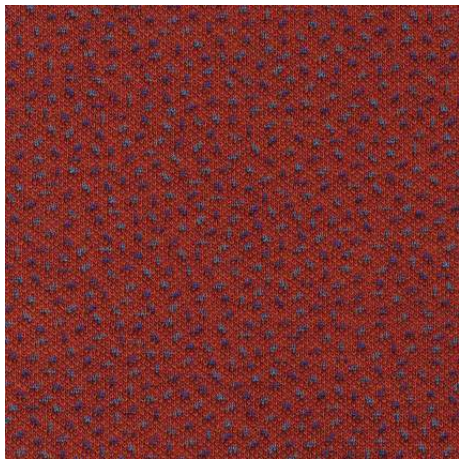
0424



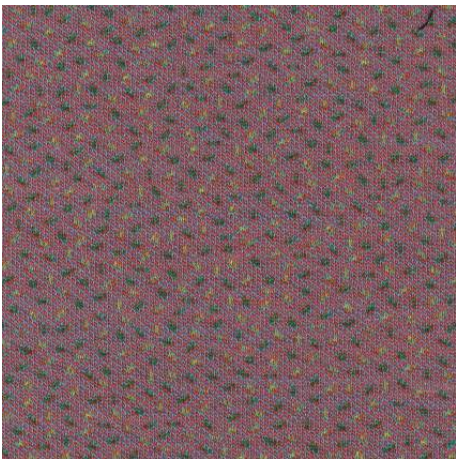
0454



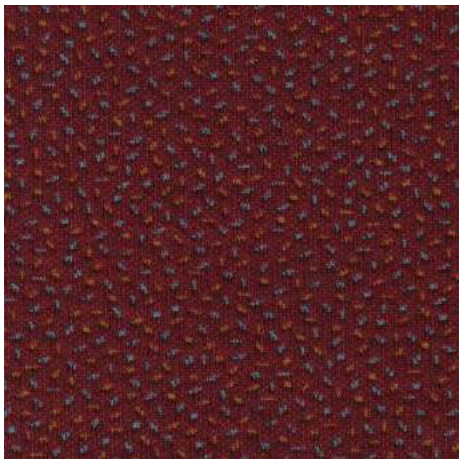
0554



0584



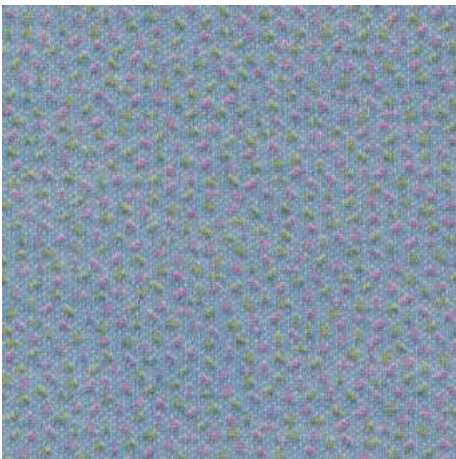
0654



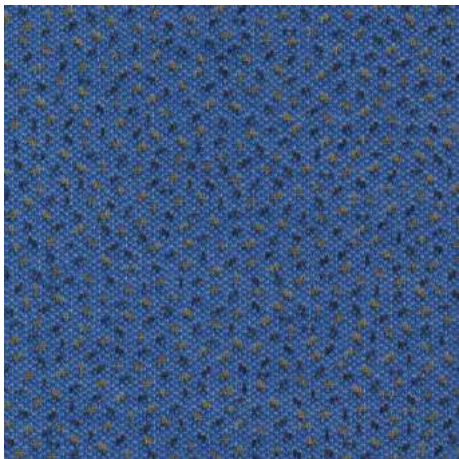
0684



0694



0714



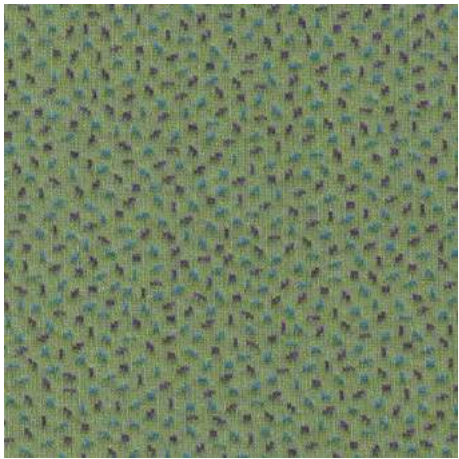
0754



0784



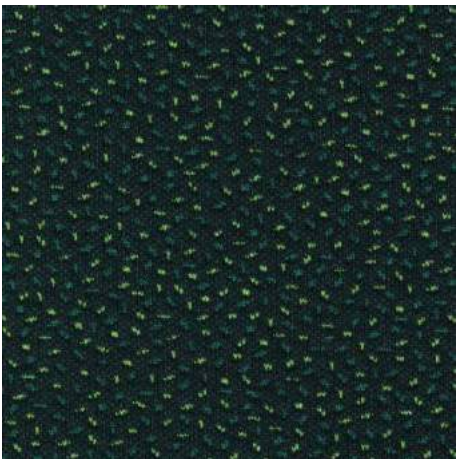
0794



0924



0974



0984

Approved for: Gropius & Flock collections



Description

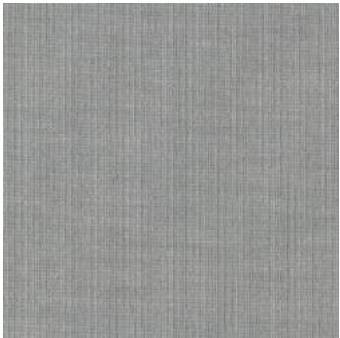
Uniform Mélange is a versatile knitted upholstery fabric designed by Febrik. It is characterised by its smooth and comfortable appearance. A polyester filling is inserted between the two knitted layers of the textile to create its volume, while the use of predominantly wool in the textile’s knitted top layer provides a natural, dry handle.

Technical data

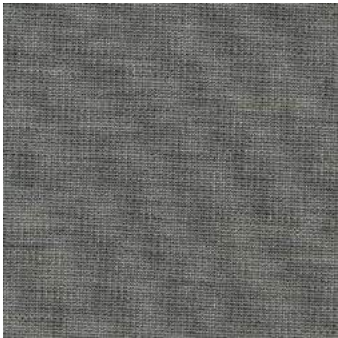
MATERIAL	68% New Wool, 22% Nylon, 10% Polyester	
WEIGHT	870 g/lin. m	
WIDTH	165 cm	
MARTINDALE CYCLES	100 000	
PILLING RESISTANCE	4	
COLOR FASTNESS TO RUBBING	Dry: 4-5, Wet: 4	
COLOR FASTNESS TO LIGHT	6	
FLAME RETARDANCY	AS/NZS 1530.3	US Cal. Bull. 117-2013
	AS/NZS 3837	DIN 4102 B2
	BS 5852 crib 5 with treatment	EN 1021-1/2
	BS 5852 part 1	ASTM E84 Class A Unadhered
	IMO FTP Code 2010 Part 8	SN 198 898.5.2 with treatment
	NFPA 260	



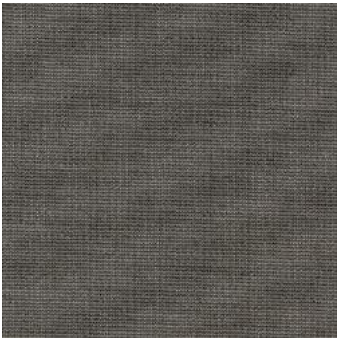
0103



0123



0133



0153



0163



0183



0193



0263



0283



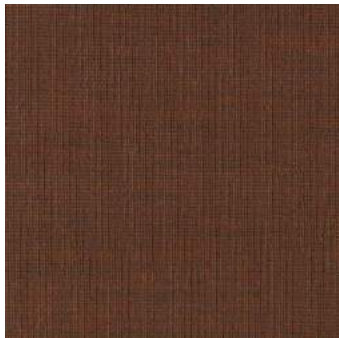
0293



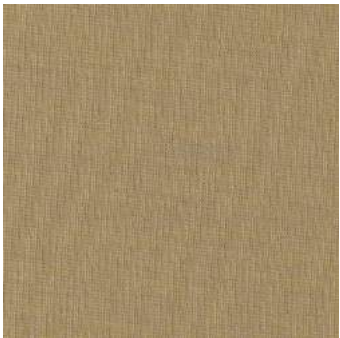
0333



0353



0363



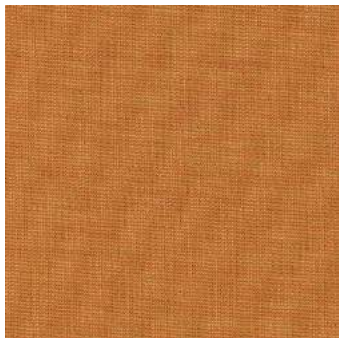
0413



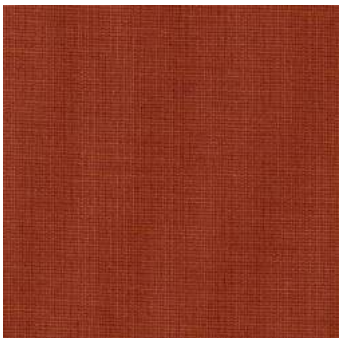
0433



0453



0463



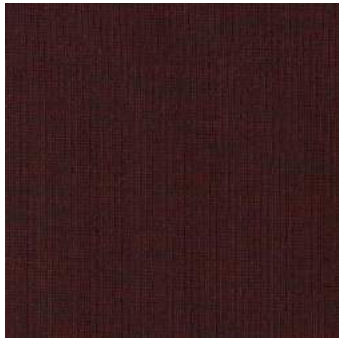
0553



0563



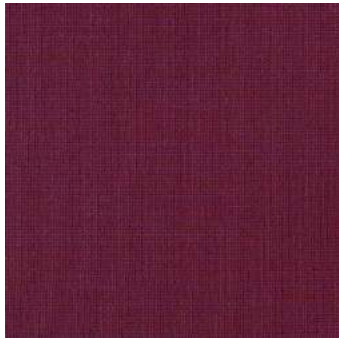
0583



0593



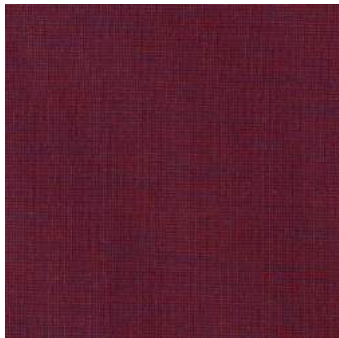
0623



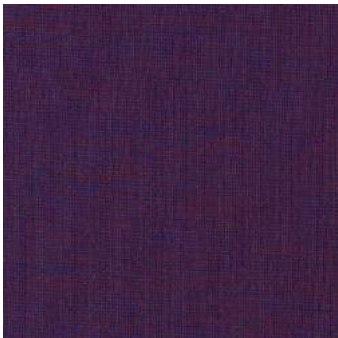
0633



0653



0663



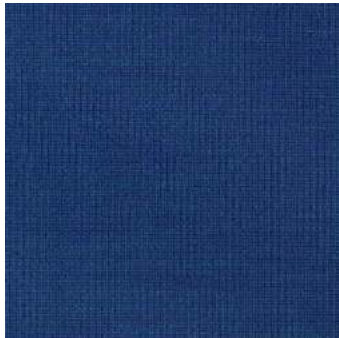
0683



0723



0753



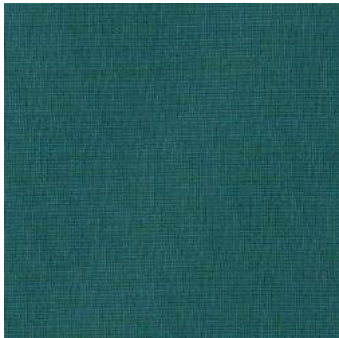
0763



0793



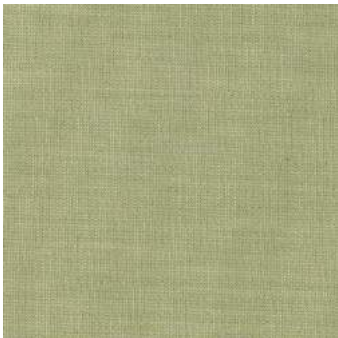
0813



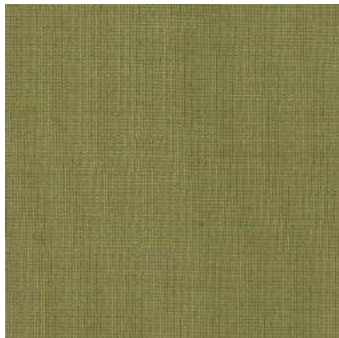
0833



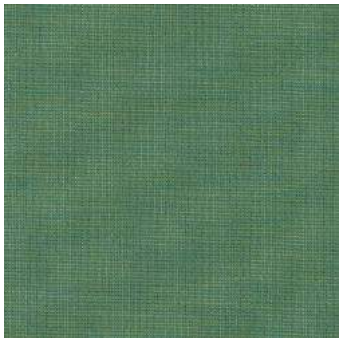
0883



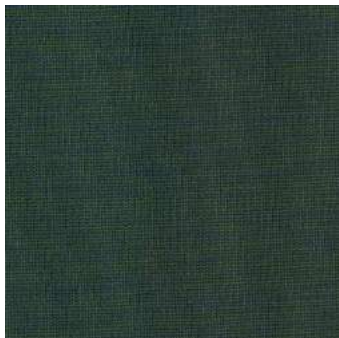
0913



0933



0963



0983



0993

Approved for: Gropius & Flock collections

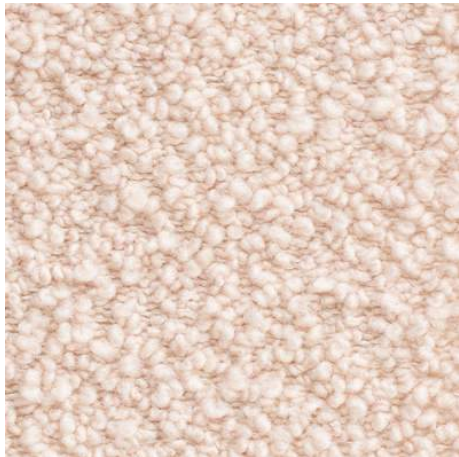


Description

A soft wool bouclé fabric reminiscent of puffy clouds. An uneven surface and textural richness are the distinctive features of this fabric. The delicate colour palette, including natural tones and darker shades, enhances the intrinsic nature of wool

Technical data

MATERIAL	70% Wool, 15% Cotton, 10% Polyamide, 5% Polyester
WEIGHT	1040 g/ml
WIDTH	140 cm
MARTINDALE CYCLES	40 000
PILLING RESISTANCE	4-5
COLOR FASTNESS TO RUBBING	Dry: 4-5, Wet: 3-4
COLOR FASTNESS TO LIGHT	6-7
FLAME RETARDANCY	UK BS5852 CIGAR. TEST FR - UK BS5852 CIG/MATCH FR - UK BS5852 CRIB 5 FR - CAL TB 117



004



001



002



003



006



007



009



010

Approved for: Gropius & Flock collections



Description

A bouclé wool and viscose fabric, inspired by precious astrakhan fur. Comfortable and bulky with a soft hand-feel.

Technical data

MATERIAL	42% Wool, 33% Viscose, 24% Cotton, 1% Polyamide
WEIGHT	1040 g/lin.m
WIDTH	130 cm
MARTINDALE CYCLES	40 000
PILLING RESISTANCE	4-5
COLOR FASTNESS TO LIGHT	6
COLOR FASTNESS TO RUBBING	Dry: 4-5, Wet: 3-4
FLAME RETARDANCY	EN 1021 - 1,2 BS5852 CIGAR. TEST BS5852 CIG/MATCH BS5852 CRIB 5 NFPA 260 CAL. TB 117



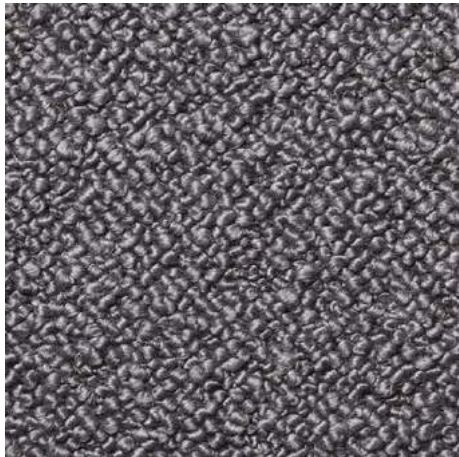
001



003



004



005



006



007



008

Approved for: Gropius & Flock collections



Description

A densely woven bouclé in wool and cotton, with a soft hand-feel and luminous appearance, whose slight melange effect confers depth and a decidedly contemporary personality. The matt version of Karakorum, this fabric is ideal for seating intended for intensive use.

Technical data

MATERIAL	70% Wool, 30% Cotton
WEIGHT	885 g/lin.m
WIDTH	130 cm
MARTINDALE CYCLES	40 000
PILLING RESISTANCE	4-5
COLOR FASTNESS TO LIGHT	5-6
COLOR FASTNESS TO RUBBING	Dry: 4-5, Wet: 3-4
FLAME RETARDANCY	BS5852 CIGAR. TEST BS5852 CIG/MATCH BS5852 CRIB 5



002



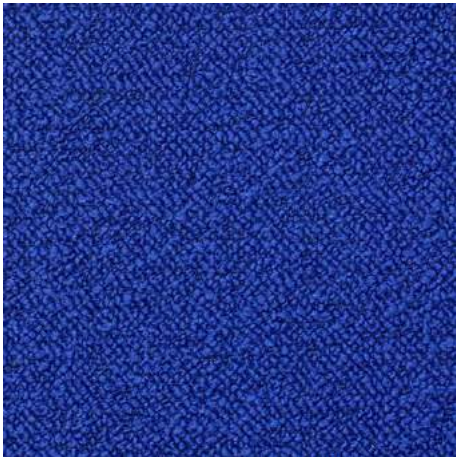
003



004



005



006

Approved for: Gropius & Flock collections



Description

Gentle 2 is the only knitted stretch velvet upholstery textile on the market. Designed by Febrik, it comes in a refreshed colour scale and combines an inviting presence with a sumptuous, soft pile.
Suitable for public and private spaces, Gentle 2 offers excellent stretchability due to its knitted construction.
Fabric is ideal for upholstering organic shapes.

Technical data

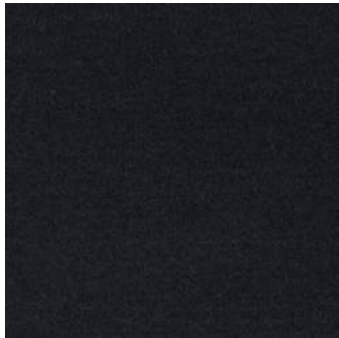
MATERIAL	60% New wool, 20% Polyester, 20% Nylon
WEIGHT	970 g/lin. m
WIDTH	167 cm
MARTINDALE CYCLES	90 000
PILLING RESISTANCE	4-5
COLOR FASTNESS TO RUBBING	Dry: 5, Wet: 5
COLOR FASTNESS TO LIGHT	6-7
FLAME RETARDANCY	BS 5852 crib 5 with treatment BS 5852 part 1 IMO FTP Code 2010 Part 8 UNI 9175 11M US Cal. Bull. 117-2013 DIN 4102 B2 EN 1021-1/2 ASTM E84 Class A Unadhered



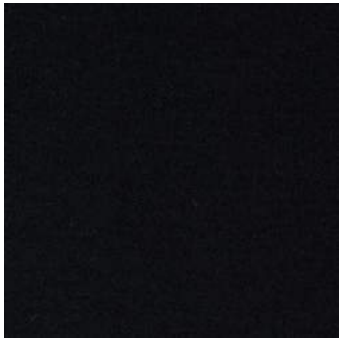
0113



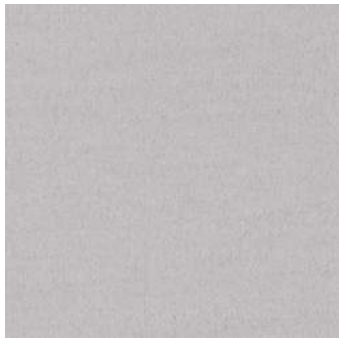
0133



0183



0193



0203



0223



0373



0443



0573



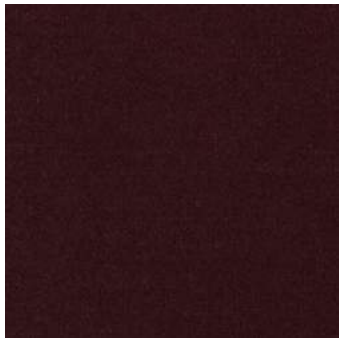
0623



0663



0673



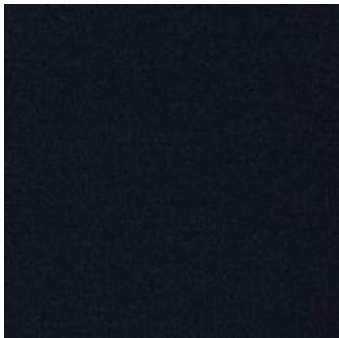
0683



0733



0753



0783



0873



0933



0963



0973

Approved for: Gropius & Flock collections



Description

“Azur cotonneux” is a beautifully-made and realistic faux-fur : its long, silky, frizzy, shiny texture recreates the fleece of the Angora goat, which is the origin of the exquisite Mohair wool. Available in four colours, Ivory, Carbon, Bronze and Misia Blue, the signature colour of the brand, “Azur cotonneux” is ideal for throws, cushions and decorative furnishings.

Technical data

FABRIC TYPE	Faux Fur
MATERIAL	100 % Polyester
WEIGHT	500 g/m²
WIDTH	155 cm



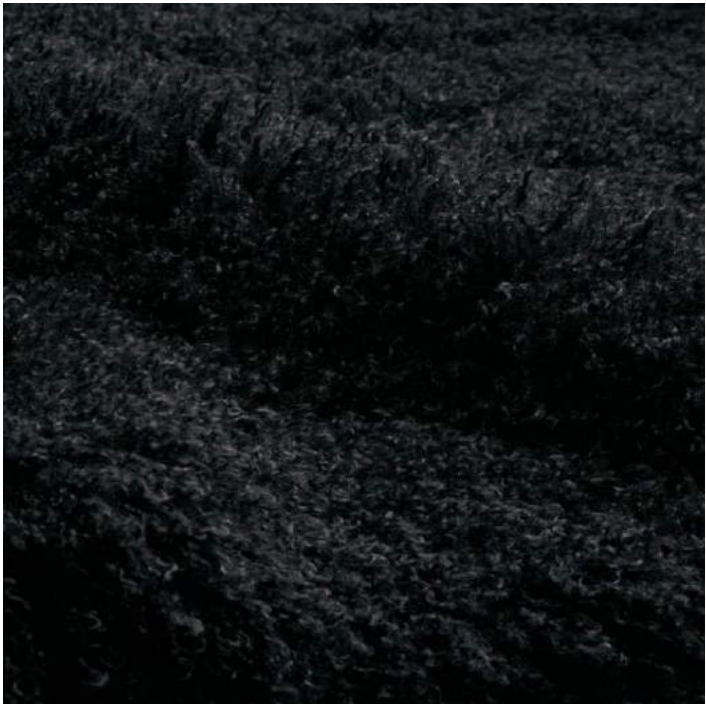
C001



C003



C002



C004